

**TECHNICAL MANUAL**

**DIRECT SUPPORT MAINTENANCE REPAIR**

**PARTS AND SPECIAL TOOLS LIST**

**(INCLUDING DEPOT MAINTENANCE REPAIR**

**PARTS AND SPECIAL TOOLS)**

**FOR**

**LASER INFRARED OBSERVATION**

**SET AN/GVS-5**

**(NSN 5860-01-062-3543)**

TECHNICAL MANUAL }  
 NO.11-5860-201-30P }

HEADQUARTERS  
 DEPARTMENT OF THE ARMY  
 WASHINGTON, DC, 1, July 1981

**DIRECT SUPPORT MAINTENANCE REPAIR PARTS  
 AND SPECIAL TOOLS LISTS  
 (INCLUDING DEPOT MAINTENANCE REPAIR  
 PARTS AND SPECIAL TOOLS)  
 FOR  
 LASER INFRARED OBSERVATION SET AN/GVS-5  
 (NSN 5860-01-062-3543)**

Current as of 26 December 1980

**REPORTING ERRORS AND RECOMMENDING IMPROVEMENTS**  
 You can help improve this manual. If you find any mistakes or if you know of a way to improve the procedures, please let us know. Mail your letter, DA Form 2028 (Recommended Changes to Publications and Blank Forms), or DA Form 2028-2 located in back of this manual direct to: Commander, US Army Communications and Electronics Materiel Readiness Command, ATTN: DRSEL-ME-MQ, Fort Monmouth, NJ 07703.  
 In either case, a reply will be furnished direct to you.

**Table of Contents**

SECTION		Page	Illus Figure
	I. Introduction . . . . .	1	
	II. Repair Parts List . . . . .	5	
Group	00 Laser Infrared Observation Set AN/GVS-5 . . . . .	5	1
	01 Laser Infrared Observation Device MX-9838/GVS-5 . . . . .	7	2
	0101 Cover Assembly See Group 01 for listing of parts)		
	0102 Trigger Circuit Assembly, A 1 (No parts authorized)		
	0103 Control Panel Assembly . . . . .	11	3
	0104 Optictd Assembly, A3 . . . . .	13	4
	010406 Eyepiece (No parts authorized)		
	0105 Laser Transmitter Module, A2 . . . . .	17	5
	0106 Power Supply Assembly, PS1 . . . . .	21	6
	0107 Detector/Preamplifier Assembly, U1 (No parts authorized)		
	0108 Video Amplifier Assembly, U2 (No parts authorized)		
	0109 Range Counter Module, U3 (No parts authorized)		
	0116 Wiring Harness, W1 (No parts authorized)		
	0117 Wiring Harness, W2 (No parts authorized)		
	0118 Wiring Harness, W3 (No parts authorized)		
	0119 Wiring Harness, W4 (No parts authorized)		
	02 Cable Assembly, Special Purpose, Electrical CX-13021/GVS-5 . . . . .	25	7
	0216 Cable Assembly Printed Wiring Board, A1 (See Group 02 for listing of parts)		
	03 Case Field, Laser Infrared Observation Device CY-7536/GVS-5 . . . . .	29	8

\*This manual supersedes TM 11-5860-201-30P, 4 February 1980.

		Page	Illus Figure
	04 Case Transmit, Laser Infrared Observation Set CY-7536/CVS-5 .....	31	9
	05 Mount, Adapter MT-4832/GVS-5 (No parts authorized)		
	10 Battery BB-516/U (No parts authorized)		
SECTION III.	Special Tools List (Not applicable)		
Group 99	Special Tools. ....	33	10
SECTION IV.	National Stock Number and Part Number Index .....	24	

# SECTION 1

## INTRODUCTION

---

### 1. Scope

This manual lists spares and repair parts; special tools; special test, measurement, and diagnostic equipment (TMDE), and other special support equipment required for performance of direct support maintenance of the AN/GVS-5. It authorizes the requisitioning and issue of spares and repair parts as indicated by the source and maintenance codes.

### 2. General

This Repair Parts and Special Tools List is divided into the following sections:

*a. Section II. Repair Parts List.* A list of spares and repair parts authorized for use in the performance of maintenance. The list also includes parts which must be removed for replacement of the authorized parts. Parts lists are composed of functional groups in numeric sequence, with the parts in each group listed in figure and item number sequence.

*b. Section III. Special Tools List.* A list of special tools, special TMDE, and other special support equipment authorized for the performance of maintenance.

*c. Section IV. National Stock Number and Part Number Index.* A list, in National item identification number (N I IN) sequence, of all National stock numbers (NSN) appearing in the listings, followed by a list, in alphameric sequence, of all part numbers appearing in the listings. National stock numbers and part numbers are cross-referenced to each illustration figure and item number appearance.

### 3. Explanation of Columns

*a. Illustration.* This column is divided as follows:

(1) *Figure number.* Indicates the figure number of the illustration on which the item is shown.

(2) *Item number.* The number used to identify item called out in the illustration.

*b. Source, Maintenance, and Recoverability (SMR) Codes.*

(1) *Source code.* Source codes indicate the manner of acquiring support items for maintenance, repair, or overhaul of end items. Source codes are entered in the first and second positions of the Uniform SMR Code format as follows:

*Code*

*De finition*

PA—Item procured and stocked for anticipated or known usage.

PB—Item procured and stocked for insurance purpose because essentiality dictates that a minimum quantity be available in the supply system.

PD—Support item, excluding support equipment, procured for initial issue or outfitting and stocked only for subsequent or additional initial issues or outfittings. No subject to automatic replenishment.

PE—Support equipment procured and stocked for initial issue or outfitting to specified maintenance repair activities.

PG—Item procured and stocked to provide for sustained support for the life of the equipment. It is applied to an item peculiar to the equipment which, because of probable discontinuance or shutdown of production facilities, would prove uneconomical to reproduce at a later time.

XA—Item is not procured or stocked because the requirements for the item will result in the replacement of the next higher assembly.

XD—A support item that is not stocked. When required, item will be procured through normal supply channels.

#### NOTE

Cannibalization or salvage may be used as a source of supply for any items source coded above except those coded XA and aircraft support items as restricted by AR 700-42.

(2) *Maintenance code.* Maintenance codes are assigned to indicate the levels of maintenance authorized to USE and REPAIR support items. The maintenance codes are entered in the third and fourth positions of the Uniform SMR Code format as follows:

(a) The maintenance code entered in the third position will indicate the lowest maintenance level authorized to remove, replace, and use the support item. The maintenance code entered in the third position will indicate one of the following levels of maintenance:

- | <i>Code</i> | <i>Application/Explanation</i>   |
|-------------|--|
| O           | Support item is removed, replaced, used at the organizational level.                                     |
| F           | Support item is removed, replaced, used at the direct support level.                                     |
| D           | Support items that are removed, replaced, used at depot, mobile depot, specialized repair activity only. |

(b) The maintenance code entered in the fourth position indicates whether the item is to be repaired and identifies the lowest maintenance level with the capability to perform complete repair (i.e., all authorized maintenance functions). This position will contain one of the following maintenance codes:

- | <i>code</i> | <i>Application/Explanation</i>   |
|-------------|--|
| O           | The lowest maintenance level capable of complete repair of the support item is the organizational level. |
| F           | The lowest maintenance level capable of complete repair of the support item is the direct support level. |
| D           | The lowest maintenance level capable of complete repair of the support item is the depot level.          |
| Z           | Nonreparable. No repair is authorized.   |

(3) *Recoverability code.* Recoverability codes are assigned to support items to indicate the disposition action on unserviceable items. The recoverability code is entered in the fifth position of the Uniform SMR Code format as follows:

- | <i>Recoverability codes</i> | <i>Definition</i>   |
|-----------------------------|---|
| Z                           | Nonreparable item. When unserviceable, condemn and dispose at the level indicated in position 3.  |
| O                           | Reparable item. When uneconomically repairable, condemn and dispose at organizational level.  |
| F                           | Reparable item. When uneconomically repairable, condemn and dispose at the direct support level.  |
| D                           | Reparable item. When beyond lower level repair capability, return to depot. Condemnation and disposal not authorized below depot level. |
| L                           | Reparable item. Repair, condemnation, and disposal not authorized below depot/specialized repair activity level.                        |

c. *National Stock Number.* Indicates the National stock number assigned to the item and will be used for requisitioning purposes.

d. *Federal Supply Code for Manufacturer (FSCM).* The FSCM is a 5-digit numeric code listed in SB 708 41/42 which is used to identify the manufacturer, distributor, or Government agency, etc.

e. *Part Number.* Indicates the primary number

used by the manufacturer (individual, company, firm, corporation, or Government activity), which controls the design and characteristics of the item by means of its engineering drawings, specifications, standards, and inspection requirements to identify an item or range of items.

NOTE

When a stock numbered item is requisitioned, the repair part received may have a different part number than the part being replaced.

f. *Description.* Indicates the Federal item name and, if required, a minimum description to identify the item.

g. *Unit of Measure (U/M).* Indicates the standard of the basic quantity of the listed item as used in performing the actual maintenance function. This measure is expressed by a two-character alphabetical abbreviation (e.g., ea, in, pr, etc). When the unit of measure differs from the unit of issue, the lowest unit of issue that will satisfy the required units of measure will be requisitioned.

h. *Quantity Incorporated in Unit.* Indicates the quantity of the item used in the breakout shown on the illustration figure, which is prepared for a functional group, subfunctional group, or an assembly.

4. Special Information

a. The following publications pertain to the AN/GVS-5 and its components:

- TM 11-5860-201-10, Laser Infrared Observation set AN/GVS-5
- TM 11-5860-201-20P, Laser Infrared Observation set AN/GVS-5
- TM 11-5860-201-20, Laser Infrared Observation set AN/GVS-5
- TM 11-5860-201-30, Laser Infrared Observation set AN/GVS-5.

b. National stock numbers (NSN's) that are missing from P source coded items have been applied for and will be added to this TM by future change/revision when they are entered in the Army Master Data File (AMDF). Until the NSN's are established and published, submit exception requisitions to: Commander, US Army Communications and Electronics Materiel Readiness Command, ATTN: DRSEL-MM, Fort Monmouth, NJ 007703 for the part required to support your equipment.

5. How to Locate Repair Parts

a When National stock number or part number is unknown.

- (1) *First.* Using the table of contents, deter-

mine the functional group within which the item belongs. This is necessary since illustrations are prepared for functional groups and listings are divided into the same groups.

(2) *Second.* Find the illustration covering the functional group to which the item belongs.

(3) *Third.* Identify the item on the illustration and note the illustration figure and item number of the item.

(4) *Fourth.* Using the Repair Parts Listing, find the figure and **item number noted on the illustration.**

**b. When National stock number or part number is known.**

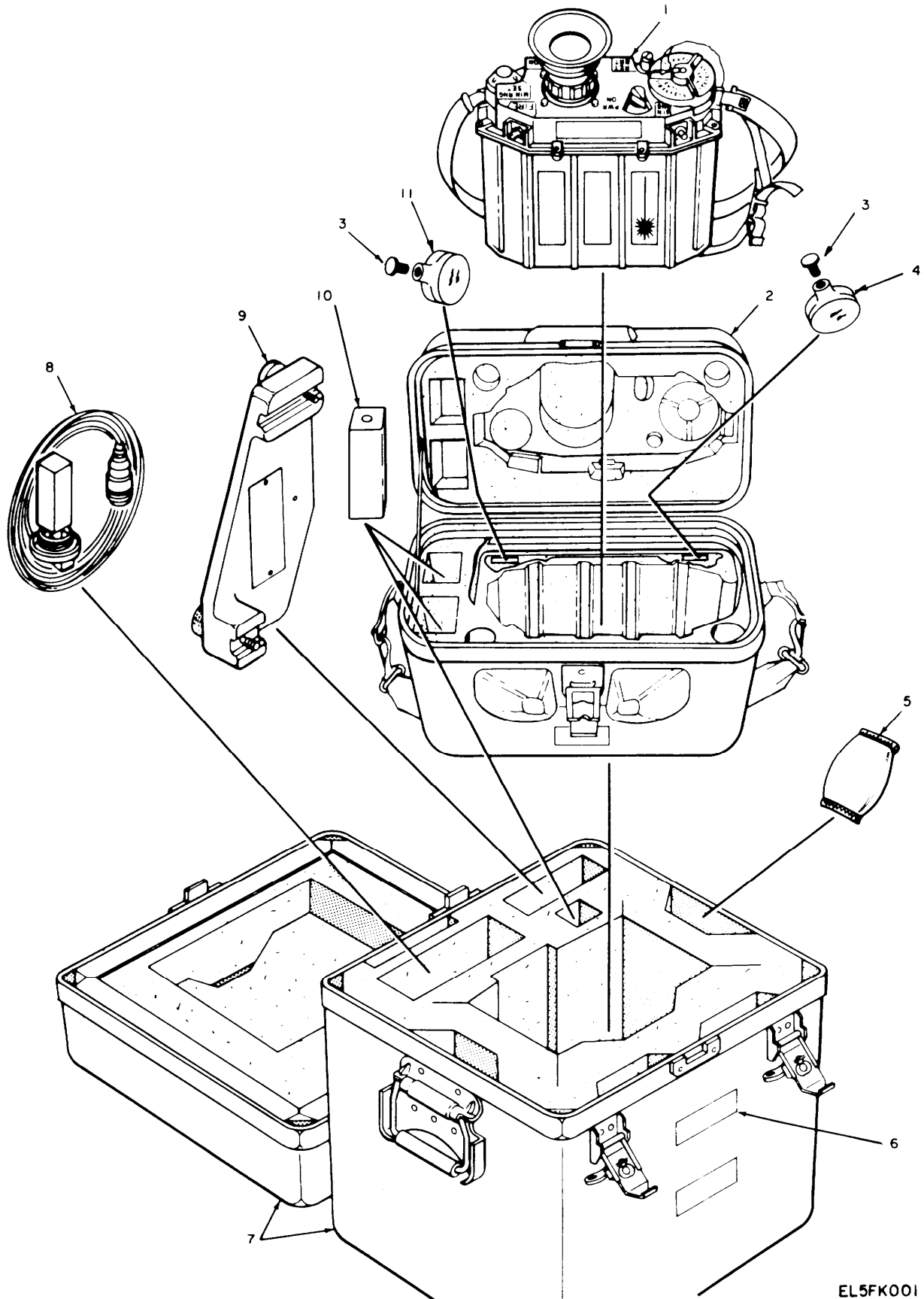
(1) *First.* Using the Index of National Stock Numbers and Part Numbers, find the pertinent National stock number or part number. This index is in NIIN sequence followed by a list of part numbers in alphameric sequence, cross-referenced to the illustration figure number and item number.

(2) *Second.* After finding the figure and item number, locate the figure and item number in the repair parts list.

#### **6. Abbreviations**

**Not applicable.**

**(Next printed page is 4)**



EL5FK001

Figure 1. Laser Infrared Observation Set AN/GVS-5

## SECTION II

TM 11-5860-201-30P

(1) ILLUSTRATION		(2)	(3)	(4)	(5)	(6)	(7)	(8)
(a) FIG NO	(b) ITEM NO	SMR CODE	NATIONAL STOCK NUMBER	FSCM	PART NUMBER	DESCRIPTION	U/M	QTY INC IN UNIT
						GROUP 00 LASER INFRARED OBSERVATION SET		
						AN/GVS-5		
						LASER, INFRARED <b>UBSE</b> .....	EA	
1	1	PDODD	5860-01-070-3803	80058	MX-9838/GVS-5	LASER, INFRARED <b>UBSE</b> .....	EA	
1	2	PAOFF	5860-01-072-2885	80058	CY-7536/GVS-5	CASE, FIELD, LASER, IN .....	EA	1
1	3	PAOZZ	5305-00-833-8631	96906	MS18212-15	SCREW, MACHIN .....	EA	2
1	4	PA000		80063	SM-C-955638	FILTER ASSY, YELLOW .....	EA	1
1	5	PAOZZ		81349	M3464TYPE1	DESICCANT .....	BG	4
1	6	XDFZZ		80063	SM-C-882416	PLATE, IDENT. ....	EA	1
1	7	PDFDD	5860-01-070-3659	80058	CY-7535/GVS-5	CASE, TRANSIT, LASER. ....	EA	1
1	8	PA000	5995-01-069-0969	80058	CX-13021/GVS-5	CABLE ASSEMBLY, SPEC .....	EA	1
1	9	PAOZZ	5860-01-069-4742	80058	MT-4832/GVS-5	MOUNT, ADAPTER .....	EA	1
1	10	PAOZZ	6140-01-042-9942	80058	BB-516-U	BATTERY, STORAGE .....	EA	3
1	11	PA000		80063	SM-C-955637	FILTER ASSY, RED .....	EA	1



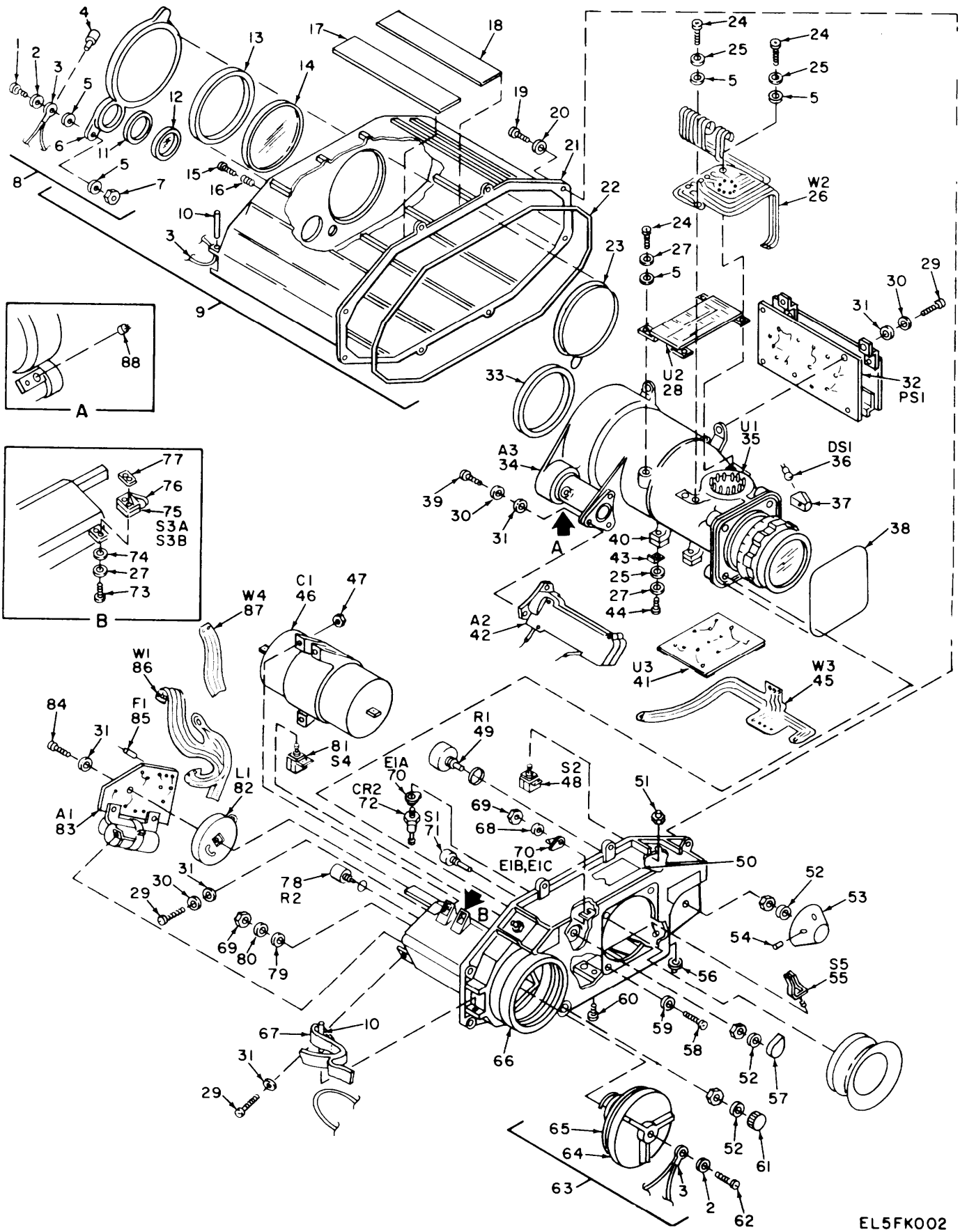


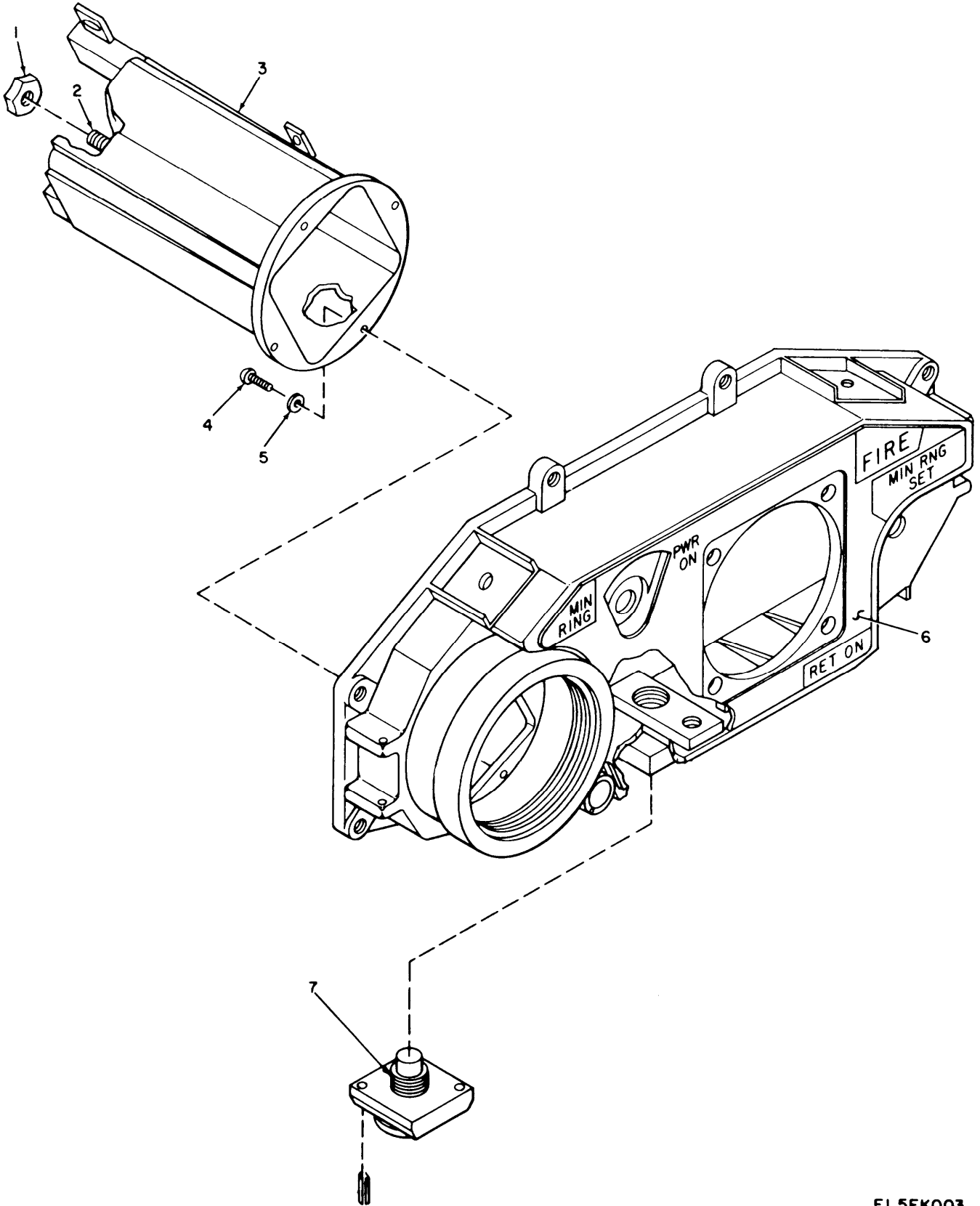
Figure 2. Laser Infrared Observation Device MX-9838/GVS-5.

EL5FK002

SECTION II		TM11-5860-201-30P							
(1)	(2)	(3)	(4)	(5)	(6)	(7)	(8)		
ILLUSTRATION					DESCRIPTION		QTY		
(A)	(B)	NATIONAL		PART			INC		
FIG	ITEM	STOCK	FSCM	NUMBER		USABLE ON CODE	U/M	IN	
NO	NO	NUMBER						UNIT	
GROUP 01 LASER INFRARED OBSERVATION DEVICE									
MX-9838/GVS-5									
2	1	PAOZZ 5305-01-076-4890	80063	SM-C-852343	SCREW,MACHINE		EA	1	
2	2	PAOZZ 5310-01-070-5550	80063	SM-C-852048	WASHER, SHOULDERED		EA	3	
2	3	PAOZZ 5860-01-075-0047	80063	SM-C-852049	CABLE ASSEMBLY		EA	2	
2	4	PAOZZ 5970-00-954-1622	81349	M23053/5-105-0	INSULATION SLEEVING		FT	1	
2	5	PAOZZ 5310-00-595-6761	96906	MS15795-802	WASHER, FLAT		EA	7	
2	6	PAOZZ	80063	SM-D-955608-1	LENS PROTECTOR		EA	1	
2	7	PAOZZ 5310-01-076-3181	80063	SM-C-852349	NUT, PLAIN, HEXAGON		EA	1	
2	8	PAOOO	80063	SM-D-955608	LENS PROTECTOR ASSY		EA	1	
2	9	PAFDD 5860-01-070-8073	80063	SM-D-852012	COVER ASSEMBLY		EA	1	
2	10	PAOZZ 5315-01-074-5941	80063	SM-C-882415	PIN, STRAP		EA	3	
2	11	PADZZ 5365-01-070-8129	80063	SM-C-852280	RING, RETAINING		EA	1	
2	12	PADZZ 5860-01-070-8130	80063	SM-A-852072	WINDOW, OPTICAL INST		EA	1	
2	13	PADZZ 5365-01-074-6347	80063	SM-C-852279	RING, RETAINING		EA	1	
2	14	PADZZ 5860-01-070-8131	80063	SM-A-852073	WINDOW, OPTICAL INST		EA	1	
2	15	PAFZZ 5305-01-076-8030	96906	MS3213-23	SCREW, SEAL		EA	1	
2	16	XDDZZ	80063	SM-C-852274	INSERT, THREADED		EA	1	
2	17	PAOZZ 7690-01-070-9088	80063	SM-C-852140	LABEL		EA	1	
2	18	PAOZZ 7690-01-070-9089	80063	SM-C-882408	LABEL		EA	1	
2	19	PAFZZ 5305-00-924-8380	96906	MS35275-229	SCREW, MACHINE		EA	8	
2	20	PAFZZ 5310-00-773-7624	80205	NAS620C6	WASHER, FLAT		EA	8	
2	21	XADZZ	80063	SM-D-852016	COVER		EA	1	
2	22	PAFZZ 5330-01-074-5983	80063	SM-D-852018	SEAL, RUBBER SPECIAL		EA	1	
2	23	XDDZZ	80063	SM-D-852281	PLENUM		EA	1	
2	24	PAFZZ 5305-00-922-8777	96906	MS35275-202	SCREW, MACHINE		EA	5	
2	25	PAFZZ 5310-00-543-4652	96906	MS35333-69	WASHER, LOCK		EA	3	
2	26	PADZZ 5860-01-074-5944	80063	SM-D-852062	HARNES, PRINTED WIR		EA	1	
2	27	PAFZZ 5310-00-928-2690	96906	MS35338-134	WASHER, LOCK		EA	4	
2	28	PAFZZ 5860-01-074-6296	80063	SM-C-852322	VIDEO AMPLIFIER		EA	1	
2	29	PAFZZ 5305-00-941-9437	96906	MS35275-215	SCREW, MACHINE		EA	8	
2	30	PAFZZ 5310-00-933-8118	96906	MS35338-135	WASHER, LOCK		EA	8	
2	31	PAFZZ 5310-00-057-0573	80205	NAS620C4	WASHER, FLAT		EA	11	
2	32	PAFDL 5860-01-074-6317	80063	SM-D-852009	POWER SUPPLY ASSEMB		EA	1	
2	33	PAFZZ 5860-01-074-5938	80063	SM-C-852023	SHIELD, LIGHT		EA	1	
2	34	PBDDL 5860-01-074-6313	80063	SM-E-852010	OPTICAL ASSEMBLY		EA	1	
2	35	PAFZZ 5860-01-074-6297	80063	SM-C-852070	DETECTOR PREAMPLIFI		EA	1	
2	36	PAFZZ 6240-01-062-0652	80063	SM-C-852155	LAMP, INCANDESCENT		EA	1	
2	37	XDDZZ	80063	SM-C-852156	HOLDER, LAMP		EA	1	
2	38	PADZZ 5330-01-074-6362	80063	SM-C-852029	SEAL, RUBBER SPECIAL		EA	1	

SECTION II		TM11-5860-201-30P					(7)	(8)
(1)	(2)	(3)	(4)	(5)	(6)			
ILLUSTRATION					DESCRIPTION			QTY
(A)	(B)	NATIONAL						INC
FIG	ITEM	STOCK	FSCM	PART		USABLE ON CODE	U/M	IN
NO	NO	NUMBER		NUMBER				UNIT
2	39	PAFZZ 5305-00-959-0379	96906	MS16995-10	SCREW,CAP, SOCKET HE		EA	3
2	40	PAFZZ 5860-01-074-5939	80063	SM-B-852133	CUSHION		EA	3
2	41	PAFZZ 5860-01-075-0048	80063	SM-D-852019	RANGE CIRCUIT		EA	1
2	42	PGFDL 5860-01-072-0397	80063	SM-D-852011	LASER, TRANSMITTER		EA	1
2	43	PAFZZ 5340-01-074-5929	80063	SM-B-852132	CLIP, MOUNTING		EA	3
2	44	PAFZZ 5305-00-922-8778	96906	MS35275-203	SCREW, MACHINE		EA	3
2	45	PADZZ 5860-01-074-5943	80063	SM-D-852063	HARNESS, PRINTED WIR		EA	1
2	46	PAFZZ 5910-01-092-3405	80063	SM-C-852030	CAPACITOR		EA	1
2	47	PAFZZ 5310-00-208-3786	80205	NAS671C4	NUT, PLAIN, HEXAGON		EA	3
2	48	PAFZZ	80063	SM-C-852342	SWITCH, DBL SET		EA	1
2	49	PAFZZ 5905-01-075-8889	80063	SM-C-852059	RESISTOR, VARIABLE, W		EA	1
2	50	XDPZZ	80063	SM-C-852096	PLATE, IDENTIFI		EA	1
2	51	PAFZZ	80063	SM-C-852345	BOOT DUST AND M		EA	1
2	52	PAFZZ 5930-00-892-9026	81349	M5423-09-03	BOOT, DUST AND MOIST		EA	1
2	53	PAOZZ 5355-01-074-5966	80063	SM-C-852038	KNOB		EA	1
2	54	PAOZZ 5305-00-717-6950	96906	MS51963-9	SETSCREW		EA	2
2	55	PAFZZ 5930-01-098-0010	21649	P4-10029	SWITCH, SENSITIVE		EA	1
2	56	PAFZZ 5930-00-893-1928	81349	M5423-10-02	BOOT, DUST AND MOSIT		EA	2
2	57	PAOZZ 5355-00-990-3173	96906	MS91528-0P18	KNOB		EA	1
2	58	PADZZ 5305-00-901-5077	80205	NAS1635-08-8	SCREW, MACHINE		EA	4
2	59	PADZZ 5310-00-069-5291	80205	NAS620C8	WASHER, FLAT		EA	4
2	60	PAFZZ 5305-01-054-2488	96906	MS3213-11	SCREW, MACHINE		EA	1
2	61	PAOZZ 5355-00-850-9799	96906	MS91528-0N1B	KNOB		EA	1
2	62	PAOZZ 5305-01-076-3164	80205	NAS1635-02LN4	SCREW, SELF-LOCKING		EA	1
2	63	PAOOO 5860-01-074-5957	80063	SM-D-852014	COVER, BATTERY BOX		EA	1
2	64	XAOZZ	80063	SM-D-852045	COVER, BATT MA		EA	1
2	65	PAOZZ 5330-00-582-2571	96906	MS9020-24	PACKING, PREFORMED		EA	1
2	66	XDFDD	80063	SM-D-852021	CONTR PANEL ASY		EA	1
2	67	PAOZZ 5340-01-074-5940	80063	SM-D-852037	STRAP ASSEMBLY, CARR		EA	1
2	68	PAFZZ 5310-00-209-1239	96906	MS35335-60	WASHER, LOCK		EA	1
2	69	PAFZZ 5310-00-812-4292	80205	NAS671C10	NUT PLAIN HEXAGON		EA	1
2	70	PAFZZ 5940-00-583-7741	96906	MS77068-4	TERMINAL, LUG		EA	3
2	71	PAFZZ 5930-01-078-0975	80063	SM-C-852276	SWITCH, ROTARY		EA	1
2	72	PAFZZ 5961-00-134-6355	81349	JAN1N3673RA	SEMICONDUCTOR DEVIC		EA	1
2	73	PAFZZ 5305-00-941-3545	96906	MS35275-209	SCREW, MACHINE		EA	2
2	74	PAFZZ 5310-00-043-4708	80205	NAS620C2	WASHER, FLAT		EA	2
2	75	PAFZZ 5930-00-803-4570	96096	MS24547-1	SWITCH, SENSITIVE		EA	1
2	76	PAFZZ 6605-00-918-3775	80063	SM-C-852056	ARM, SWITCH ACTUATOR		EA	1
2	77	PAFZZ 5310-01-074-5930	80063	SM-B-852077	NUT PLATE INTERLOCK		EA	2
2	78	PAFZZ 5905-01-092-4203	80063	SM-C-852058	RESISTOR, VARIA		EA	1

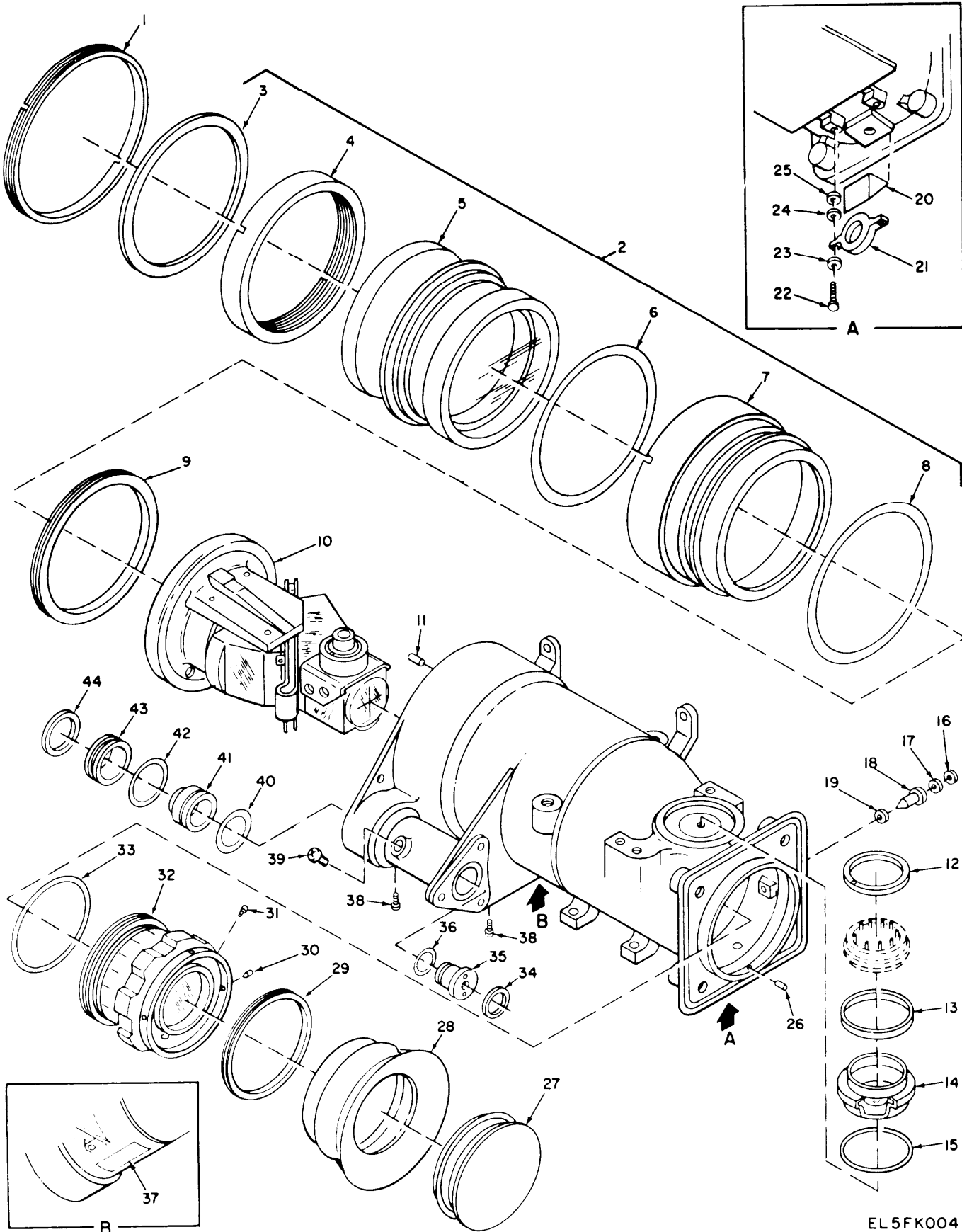
SECTION II		TM11-5860-201-30P					(7)	(8)
(1)	(2)	(3)	(4)	(5)	(6)			
ILLUSTRATION					DESCRIPTION			QTY
(A)	(B)	NATIONAL		PART				INC
FIG	ITEM	STOCK	FSCM	NUMBER		USABLE ON CODE	U/M	IN
NO	NO	NUMBER						UNIT
2	79	PAFZZ	5310-00-781-9483	80205	NAS620C10L	WASHER, FLAT	EA	1
2	80	PAFZZ	5310-00-543-5933	96906	MS35333-73	WASHER, LOCK	EA	1
2	81	PAFZZ	5930-01-097-9525	21649	P4-10022	SWITCH, SENSITIVE	EA	1
2	82	PAFZZ	5950-01-075-7262	80063	SM-C-852034	REACTOR	EA	1
2	83	PAFFFF	5860-01-070-8993	80063	SM-D-852025	TRIGGER CIRCUIT	EA	1
2	84	PAFZZ	5305-01-076-3163	80205	NAS1635-04LN12	SCREW, SELF-LOCKING	EA	1
2	85	PAFZZ	5920-00-413-1338	81349	FM04-125V3A	FUSE, CARTRIDGE	EA	1
2	86	PADZZ	5860-01-074-5945	80063	SM-D-852061	HARNESS, PRINTED WIR	EA	1
2	87	PADZZ	5860-01-074-5942	80063	SM-D-937800	HARNESS, PRINTED WIR	EA	1
2	88	PAFZZ	5961-00-518-3483	80063	SM-C-852160	SEMICONDUCTOR DEVIC	EA	1



EL5FK003

Figure 3. Control Paxel Assembly.

SECTION II		TM11-5860-201-30P					
(1)	(2)	(3)	(4)	(5)	(6)	(7)	(8)
ILLUSTRATION					DESCRIPTION		QTY
(A)	(B)	NATIONAL					INC
FIG	ITEM	STOCK	FSCM	PART		USABLE ON CODE	IN
NO	NO	NUMBER		NUMBER		U/M	UNIT
GROUP 0103 CONTROL PANEL ASSEMBLY							
3	1	PAFZZ	5310-00-812-4292	80205	NAS671C10		EA 1
3	2	PAFZZ	5940-01-070-8994	80063	SM-C-852043		EA 1
3	3	PAFFF	5860-01-070-9100	80063	SM-D-937801		EA 1
3	4	PAFZZ	5305-00-941-3551	96906	MS35275-213		EA 4
3	5	PAFZZ	5310-00-723-9676	80205	NAS620C4L		EA 4
3	6	XDOZZ		80063	SM-D-852136		EA 1
3	7	XDDZZ		80063	SM-C-852067		EA 1



EL 5FK004

Figure 4. Optical Assembly, A3.

SECTION II (1) ILLUSTRATION (A) (B) FIG ITEM NO NO		(2) SMR CODE	(3) NATIONAL STOCK NUMBER	TM11-5860-201-30P (4) (5) FSCM PART NUMBER		(6) DESCRIPTION	(7) USABLE ON CODE U/M	(8) QTY INC IN UNIT
GROUP 0104 OPTICAL ASSEMBLY, A3								
4	1	PADZZ	5365-01-074-5212	80063	SM-C-852163	RING, SCREW	EA	1
4	2	XDDDL		80063	SM-C-852201	OBJECTIVE COMPL	EA	1
4	3	PADZZ	5365-01-071-9184	80063	SM-C-852205	RING SCREW	EA	1
4	4	PADZZ	5365-01-070-5423	80063	SM-C-852202	RING, ECCENTRIC	EA	1
4	5	PADZZ	5860-01-070-5422	80063	SM-D-852207	OBJECTIVE LENS ASSE	EA	1
4	6	PADZZ	5330-01-080-3804	80063	SM-C-852199-6	PACKING, PREFORMED	EA	1
4	7	PADZZ	5365-01-071-4447	80063	SM-C-852203	RING, FOCUSING	EA	1
4	8	PADZZ	5330-01-080-2995	80063	SM-C-852199-7	PACKING, PREFORMED	EA	1
4	9	PADZZ	5365-01-071-4442	80063	SM-C-852164	RING, SCREW	EA	1
4	10	PADZZ	5860-01-074-0006	80063	SM-E-852219	PRISM SETASSEMBLY	EA	1
4	11	XDDZZ		80063	SM-C-852177-2	PIN, DOWEL PREC	EA	1
4	12	PAPZZ	5365-01-072-0430	80063	SM-C-852200	RING, SCREW	EA	1
4	13	PADZZ	5365-01-074-6310	80063	SM-C-852173	RING, SCREW	EA	1
4	14	PADZZ	5860-01-075-3298	80063	SM-C-852193	LENS, MOUNT	EA	1
4	15	PADZZ	5330-01-080-3803	80063	SM-C-852199-8	PACKING, PREFORMED	EA	1
4	16	PADZZ	5365-01-074-6311	80063	SM-C-852172	RING, SCREW	EA	1
4	17	PADZZ	5365-01-070-9112	80063	SM-B-852171	SHIM	EA	1
4	18	XDDZZ		80063	SM-B-852186	ILLUMIN DIFF	EA	1
4	19	PADZZ	5330-01-080-1772	80063	SM-C-852196	PACKING, PREFORMED	EA	1
4	20	XDDZZ		80063	SM-C-852169	PRISM	EA	1
4	21	PADZZ	5860-01-070-8995	80063	SM-C-852187	LENS 2 ASSEMBLY	EA	1
4	22	PADZZ	5305-00-068-5410	96906	MS16995-2	SCREW, CAP, SOCKET HE	EA	2
4	23	PADZZ	5310-00-928-2690	80205	NAS1640-2	WASHER, LOCK	EA	2
4	24	PADZZ	5310-00-716-5618	96906	MS51859-1	WASHER, FLAT	EA	2
4	25	PADZZ	5365-01-070-9111	80063	SM-B-852176	SHIM	EA	1
4	26	XDDZZ		80063	SM-C-852177-1	PIN, DOWEL PREC	EA	1
4	27	PAOZZ	5340-01-077-0982	80063	SM-C-852123	PLUG, PROTECTIVE, DUS	EA	1
4	28	PAOZZ	5860-01-071-4514	80063	SM-C-852244	EYESHIELD, OPTICAL I	EA	1
4	29	PADZZ	5365-01-071-4444	80063	SM-C-852165	RING, SCREW	EA	1
4	30	PADZZ		80063	SM-C-852304	SET SCREW, SLOT	EA	4
4	31	PADZZ	5305-01-071-4443	80063	SM-B-882442	SCREW, SEAL	EA	1
4	32	PADDD	5860-01-077-4729	80063	SM-C-852248	EYEPIECE ASSEMBLY, O	EA	1
4	33	PADZZ	5330-01-080-5007	80063	SM-C-852199-5	PACKING, PREFORMED	EA	1
4	34	PADZZ	5365-01-071-4445	80063	SM-B-852167	RING, SCREW	EA	1
4	35	PADZZ	5860-01-072-7994	80063	SM-C-852264	LENS 3 ASSEMBLY	EA	1
4	36	PADZZ	5330-01-080-2996	80063	SM-C-852199-1	PACKING, PREFORMED	EA	1
4	37	XDDZZ		80063	SM-B-852453	PLATE IDENTIF	EA	1
4	38	PADZZ	5305-00-433-3707	80063	SM-C-852197	SCREW, MACHINE	EA	2
4	39	PADZZ	5305-01-072-0429	80063	SM-B-852175	SCREW, SEAL	EA	1



SECTION II		TM11-5860-201-30P						(7)	(8)
(1)	(2)	(3)	(4)	(5)	(6)				
ILLUSTRATION					DESCRIPTION			QTY	
(A)	(B)	NATIONAL						INC	
FIG	ITEM	SMR	STOCK	PART				IN	
NO	NO	CODE	NUMBER	NUMBER		USABLE ON CODE	U/M	UNIT	
4	40	PADZZ	5330-01-080-2997	80063	SM-C-852199-2	PACKING, PREFORMED	EA	1	
4	41	PADZZ	5860-01-072-8869	80063	SM-C-852259	LENS	EA	1	
4	42	PADZZ	5330-01-085-7775	80063	SM-C-852199-3	PACKING, PREFORMED	EA	1	
4	43	PADZZ	5365-01-072-1496	80063	SM-C-852267	RING, ECCETRIC	EA	1	
4	44	PADZZ	5365-01-075-2237	80063	SM-B-852166	RING, SCREW	EA	1	

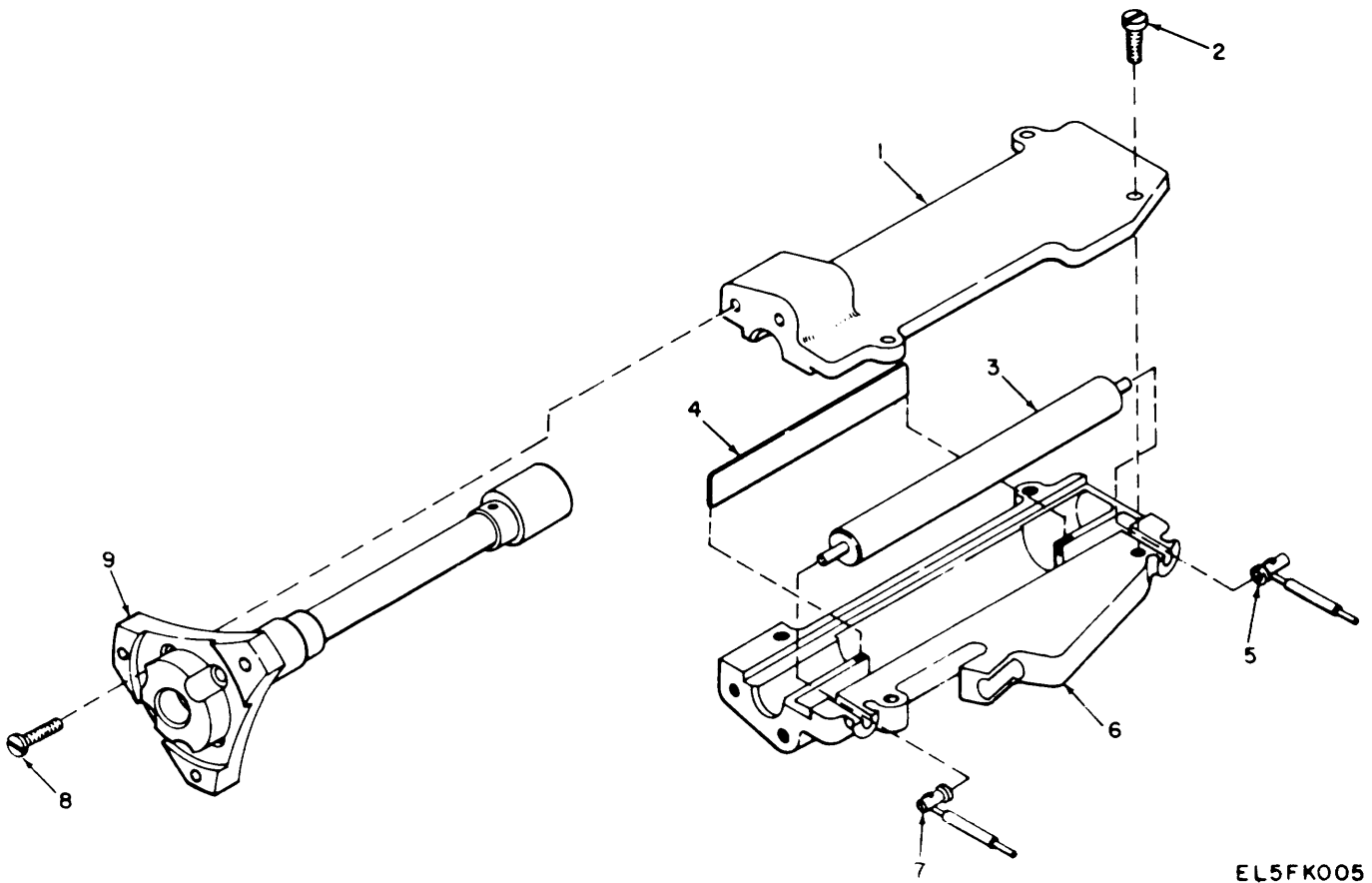
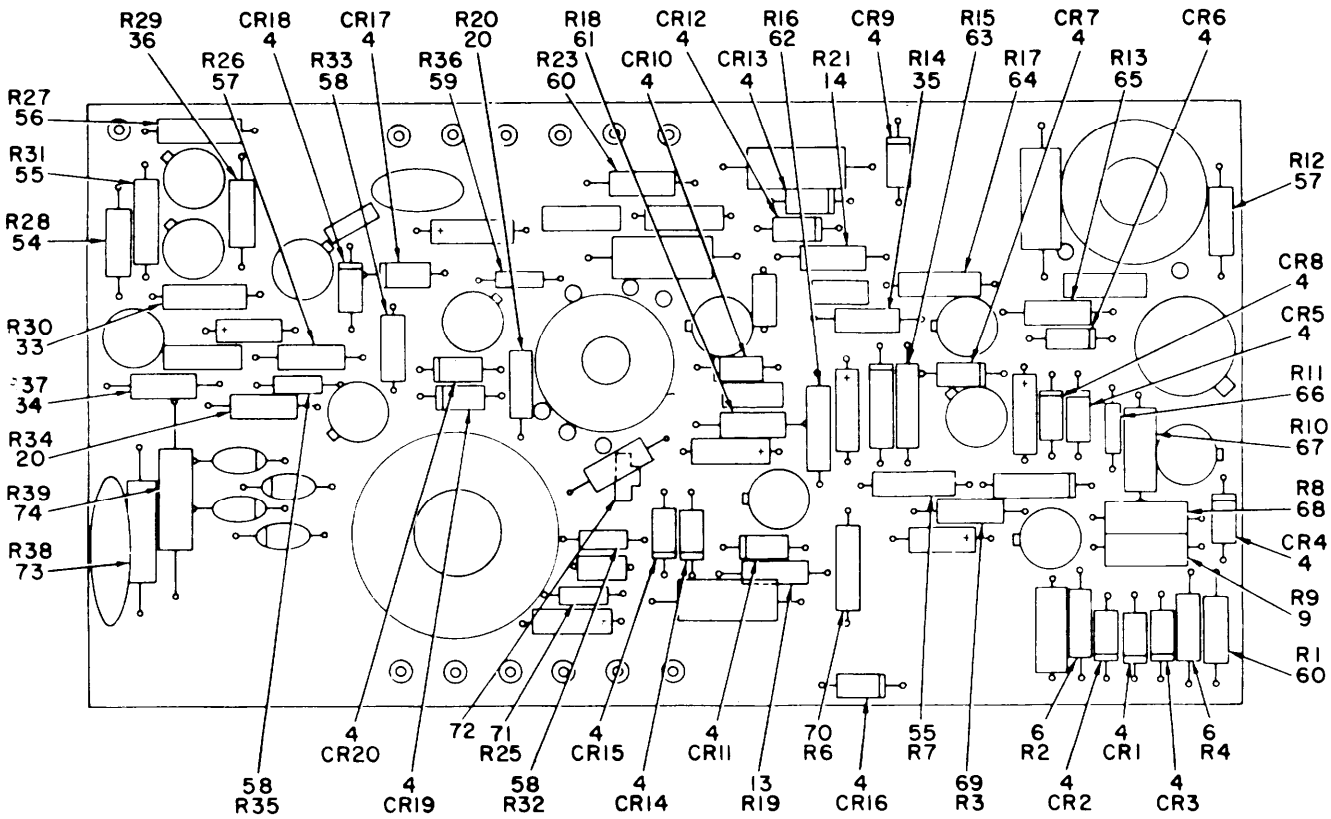
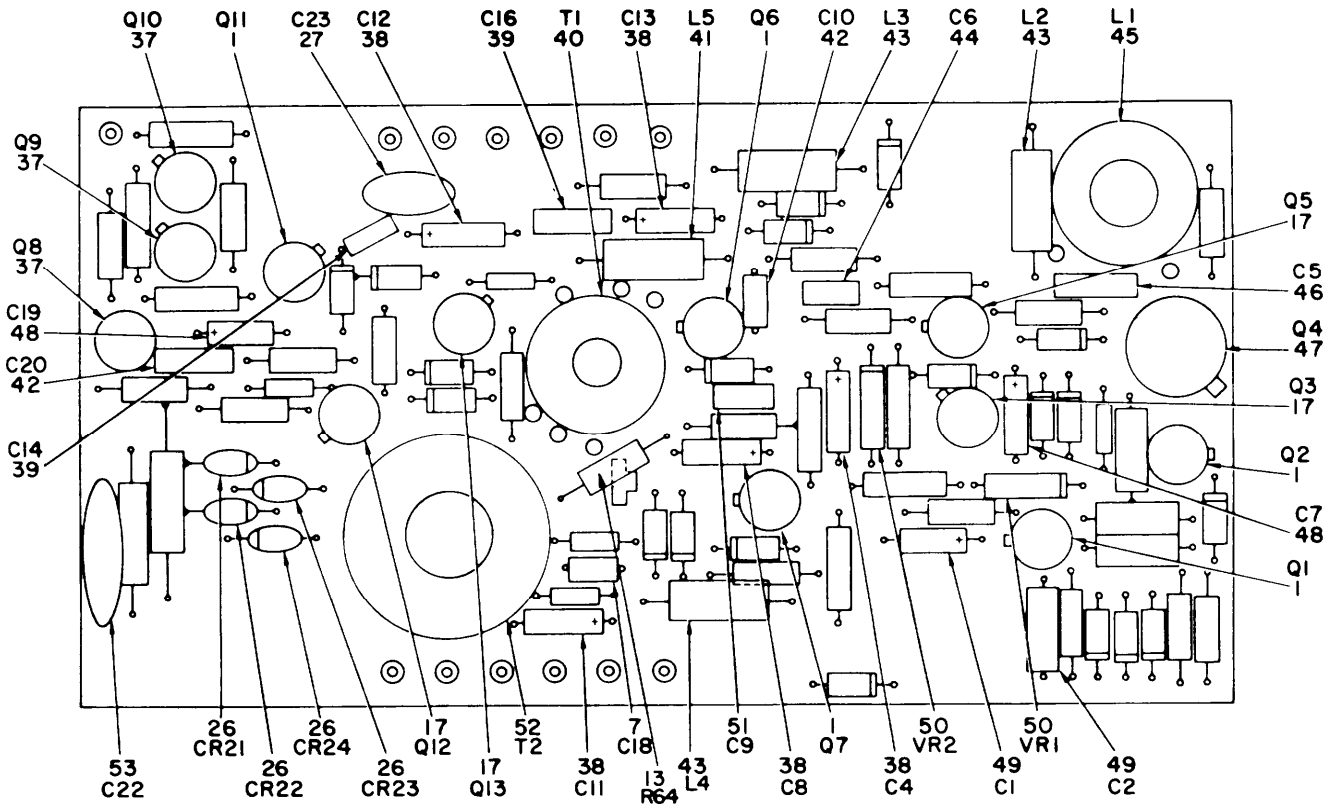


Figure 5. Laser Transmitter Module, A2.

SECTION II		TM11-5860-201-30P					
(1)	(2)	(3)	(4)	(5)	(6)	(7)	(8)
ILLUSTRATION					DESCRIPTION		QTY
(A)	(B)	NATIONAL					INC
FIG	ITEM	STOCK	FSCM	PART		USABLE ON CODE	IN
NO	NO	NUMBER		NUMBER		U/M	UNIT
					GROUP 0105 LASER TRANSMITTER MODULE, A2		
5	1	XADZZ		80063	SM-D-882432		EA 1
5	2	PADZZ	5305-00-941-6402	96906	MS35275-206		EA 4
5	3	PADZZ	6240-01-089-2656	80063	SM-C-852512		EA 1
5	4	PADZZ	5860-01-074-6299	80063	SM-B-852511		EA 1
5	5	PADZZ	5860-01-080-4831	80063	SM-C-882430		EA 1
5	6	XADZZ		80063	SM-D-882433		EA 1
5	7	PADZZ	5860-01-074-6298	80063	SM-C-882431		EA 1
5	8	PADZZ	5305-00-922-8777	96906	MS35275-202		EA 4
5	9	PGDZZ	5860-01-074-6300	80063	SM-D-852500		EA 1





EL5FK007

Figure 6. Power Supply Assembly, PS1 (Sheet 2 of 2).

SECTION II (1) ILLUSTRATION (A) (B) FIG ITEM NO NO		(2) SMR CODE	(3) NATIONAL STOCK NUMBER	TM11-5860-201-30P (4) (5) FSCM PART NUMBER		(6) DESCRIPTION	(7) USABLE ON CODE U/M	(8) QTY INC IN UNIT
GROUP 0106 POWER SUPPLY ASSEMBLY, PS1								
6	1	PADZZ	5961-00-925-3777	81349	JAN2N2907A	TRANSISTOR	EA	6
6	2	PADZZ	5905-00-780-8234	81349	RCR07G272JM	RES FXD CMPSN	EA	4
6	3	PADZZ	5905-00-106-3666	81349	RCR07G103KM	RESISTOR, FIXED, COMP	EA	4
6	4	PADZZ	5961-00-938-1135	81349	JAN1N4148	SEMICONDUCTOR DEVIC	EA	31
6	5	PADZZ	5962-01-003-2572	80063	SM-C-852583	MICROCIRCUIT, LINEAR	EA	1
6	6	PADZZ	5905-01-041-0632	81349	RCR07G184KM	RESISTOR, FIXED, COMP	EA	3
6	7	PADZ	5910-01-053-0263	81349	M39014-01-1404	CAPACITOR, FIXED, CER	EA	3
6	8	PADZZ	5910-00-143-0501	81349	M39014/02-1332	CAPACITOR, FIXED, CER	EA	2
6	9	PADZZ	5905-00-256-5051	81349	RNC55H5621FS	RESISTOR, FIXED, FILM	EA	2
6	10	PADZZ	5961-00-160-5528	81349	JAN1N4570A	SEMICONDUCTOR DEVIC	EA	1
6	11	PADZZ	5950-01-079-3250	80063	SM-C-852258	REACTOR	EA	1
6	12	PADZZ	5905-00-006-5599	81349	RJ24FW503	RESISTOR, VARIABLE, N	EA	1
6	13	PADZ	5905-00-106-3667	81349	RCR07G120JS	RESISTOR, FIXED, COMP	EA	3
6	14	PADZZ	5905-00-141-1183	81349	RCR07G101JM	RESISTOR, FIXED, COMP	EA	3
6	15	PADZZ		81349	M39014-01-1422	CAPACITOR, FIXED CER	EA	1
6	16	PADZZ		80063	SM-C-852567-4	CAPACITOR, FIXED	EA	1
6	17	PADZZ	5961-00-951-8757	81349	JAN2N2222A	TRANSISTOR	EA	6
6	18	PADZZ	5999-01-025-1009	80063	SM-C-852344	MOUNTING PAD, ELECTR	EA	15
6	19	PADZZ	5961-00-565-5092	81349	JAN1N4942	SEMICONDUCTOR DEVIC	EA	1
6	20	PADZZ	5905-00-728-6136	81349	RCR07G182JM	RESISTOR, FIXED, COMP	EA	3
6	21	PADZZ	5961-00-254-2993	81349	JAN2N4150	TRANSISTOR	EA	1
6	22	PADZZ	5999-00-433-1940	80063	SM-C-852346	MOUNTING PAD, ELECTR	EA	2
6	23	PADZZ	5950-01-084-2562	80063	SM-C-852337	TRANSFORMER, RADIO F	EA	1
6	24	PADZZ	5905-00-135-6045	81349	RCR07G330JS	RESISTOR, FIXED, COMP	EA	1
6	25	XDDZZ		80063	SM-C-882390	CABLE TIE	EA	1
6	26	PADZZ	5961-00-494-8992	80063	SM-C-852302-1	SEMICONDUCTOR DEVIC	EA	5
6	27	PADZZ	5910-00-838-9421	81349	CK60AW102M	CAPACITOR, FIXED, CER	EA	2
6	28	PADZZ	5950-01-084-2563	80063	SM-C-852311	TRANSFORMER, RADIO F	EA	1
6	29	PADZZ	5905-01-079-1340	80063	SM-C-852581-2	RESISTOR, FIXED, FILM	EA	1
6	30	PADZZ	5905-00-184-7704	81349	RLR07C12R0GR	RESISTOR, FIXED, FILM	EA	1
6	31	PADZZ	5905-00-118-4559	81349	RCR07G333JS	RESISTOR, FIXED, COMP	EA	1
6	32	PADZZ	5910-00-010-8498	81349	M39014-01-1345	CAPACITOR, FIXED, CER	EA	1
6	33	PADZZ	5905-00-151-4677	81349	RNC55J5622FS	RESISTOR, FIXED, FILM	EA	2
6	34	PADZZ	5905-00-126-6694	81349	RCR07G475JS	RESISTOR, FIXED, COMP	EA	2
6	35	PADZZ	5905-00-228-5506	81349	RCR07G622JM	RESISTOR, FIXED, COMP	EA	3
6	36	PADZZ	5905-00-119-3505	81349	RCR07G683JS	RESISTOR, FIXED, COMP	EA	2
6	37	PADZZ	5961-00-226-8579	81349	JAN2N930	TRANSISTOR	EA	3
6	38	PADZZ		80063	SM-C-852567-2	CAPACITOR, FIXED	EA	5
6	39	PADZZ	5910-01-003-8291	81349	M39014-02-1403	CAPACITOR, FIXED CER	EA	2

SECTION II				TM11-5860-201-30P					
(1)	(2)	(3)	(4)	(5)	(6)	(7)	(8)		
ILLUSTRATION					DESCRIPTION		QTY		
(A)	(B)	NATIONAL		PART			INC		
FIG	ITEM	STOCK	FSCM	NUMBER		USABLE ON CODE	IN		
NO	NO	NUMBER					UNIT		
6	40	PADZZ	5950-01-084-2561	80063	SM-C-852290		EA	1	
6	41	PADZZ	5950-01-007-4681	96906	MS75089-18		EA	1	
6	42	PADZZ	5910-00-113-5471	81349	M39014-01-1336		EA	2	
6	43	PADZZ	5950-01-029-8025	96906	MS75088-10		EA	3	
6	44	PADZZ	5910-00-010-8666	81349	M39014-01-1357		EA	1	
6	45	PADZZ	5950-01-079-3249	80063	SM-C-852456		EA	1	
6	46	XDDZZ	5910-00-153-9996	81349	M39014-02-1391		EA	1	
6	47	PADZZ	5961-01-029-9159	80063	SM-C-852320		EA	1	
6	48	PADZZ		80063	SM-C-852567-3		EA	2	
6	49	PADZZ	5910-00-409-5407	80063	SM-C-852567-1		EA	2	
6	50	PADZZ	5961-00-008-8361	81349	JAN1N4104		EA	2	
6	51	PADZZ		81349	M39014-02-1387		EA	1	
6	52	PADZZ	5950-01-079-3252	80063	SM-C-852306		EA	1	
6	53	PADZZ	5910-00-822-5683	81349	CK63AW103M		EA	1	
6	54	PADZZ	5905-00-485-4648	81349	RCR07G244JS		EA	1	
6	55	XDDZZ	5905-00-283-3015	81349	RNC55H1002FM		EA	2	
6	56	PADZZ	5905-00-350-8351	81349	RNC55H6812FS		EA	1	
6	57	PADZZ	5905-00-110-7620	81349	RCR07G102KM		EA	2	
6	58	PADZZ	5905-01-035-5065	81349	RCR05G103JS		EA	3	
6	59	PADZZ	5905-00-320-6787	81349	RCR05G6R8JS		EA	1	
6	60	PADZZ	5905-00-106-1249	81349	RCR07G510JM		EA	2	
6	61	PADZZ	5905-00-135-3975	81349	RCR07G680JS		EA	1	
6	62	PADZZ	5905-01-074-6369	80063	SM-A-852291		EA	1	
6	63	PADZZ	5905-00-492-2173	81349	RNC55H4750FS		EA	1	
6	64	PADZZ	5905-00-138-3376	81349	RNC55H1001FM		EA	1	
6	65	PADZZ	5905-00-120-9154	81349	RCR07G471JS		EA	1	
6	66	PADZZ	5905-00-433-6483	81349	RCR05G392JM		EA	1	
6	67	PADZZ	5905-00-139-1923	81349	RNC55H4422FS		EA	1	
6	68	PADZZ		81349	RW81UR866F		EA	1	
6	69	PADZZ	5905-00-114-0711	81349	RCR07G472KM		EA	1	
6	70	PADZZ	5905-00-401-8687	81349	RNC55H2432FS		EA	1	
6	71	PADZZ	5905-00-617-5091	81349	RCR05G472JS		EA	1	
6	72	PADZZ	5310-01-081-1285	80063	SM-C-852373		EA	1	
6	73	PADZZ	5905-00-114-5456	81349	RCR20G684JS		EA	1	
6	74	PADZZ	5905-01-079-1339	80063	SM-C-852581-1		EA	1	

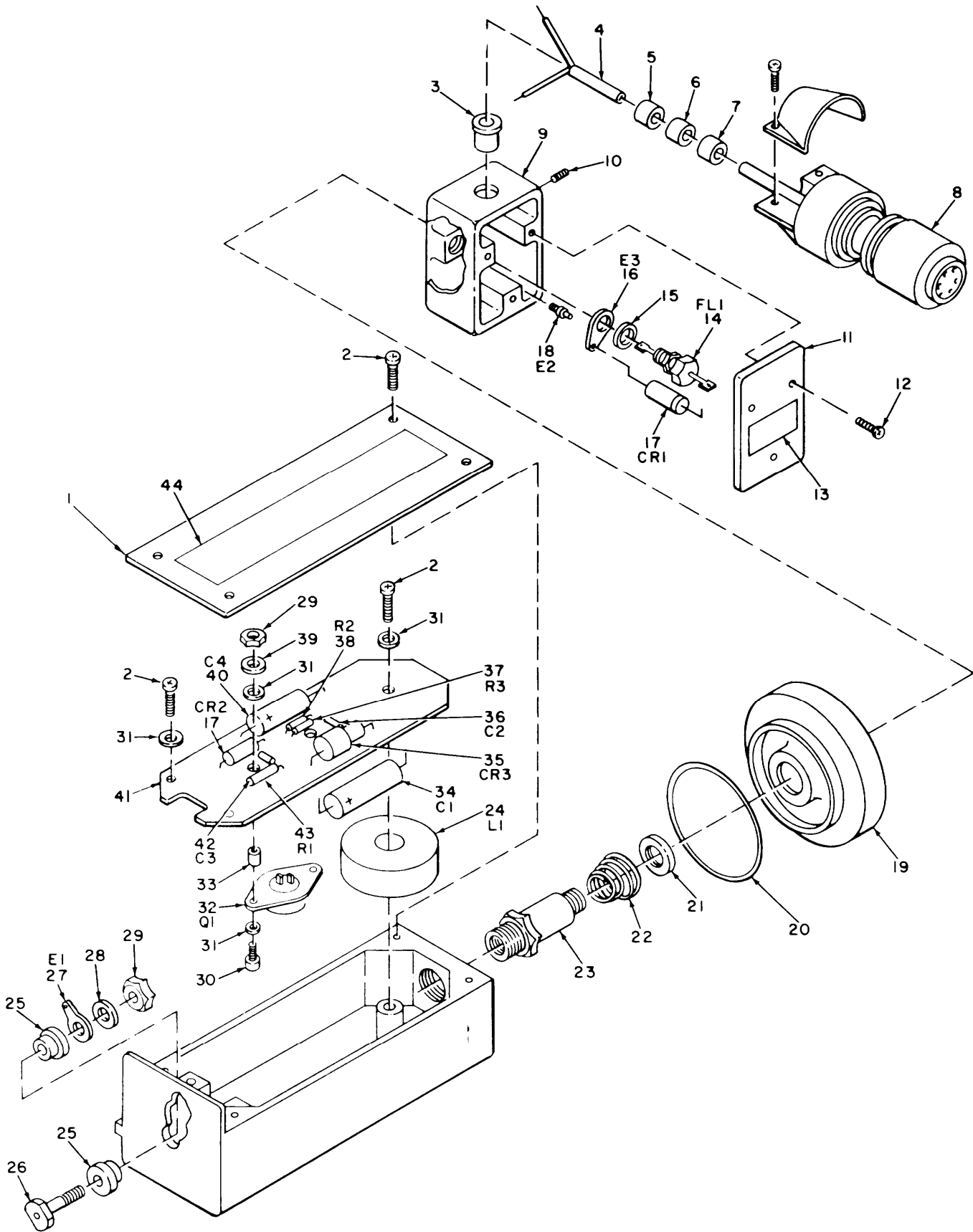
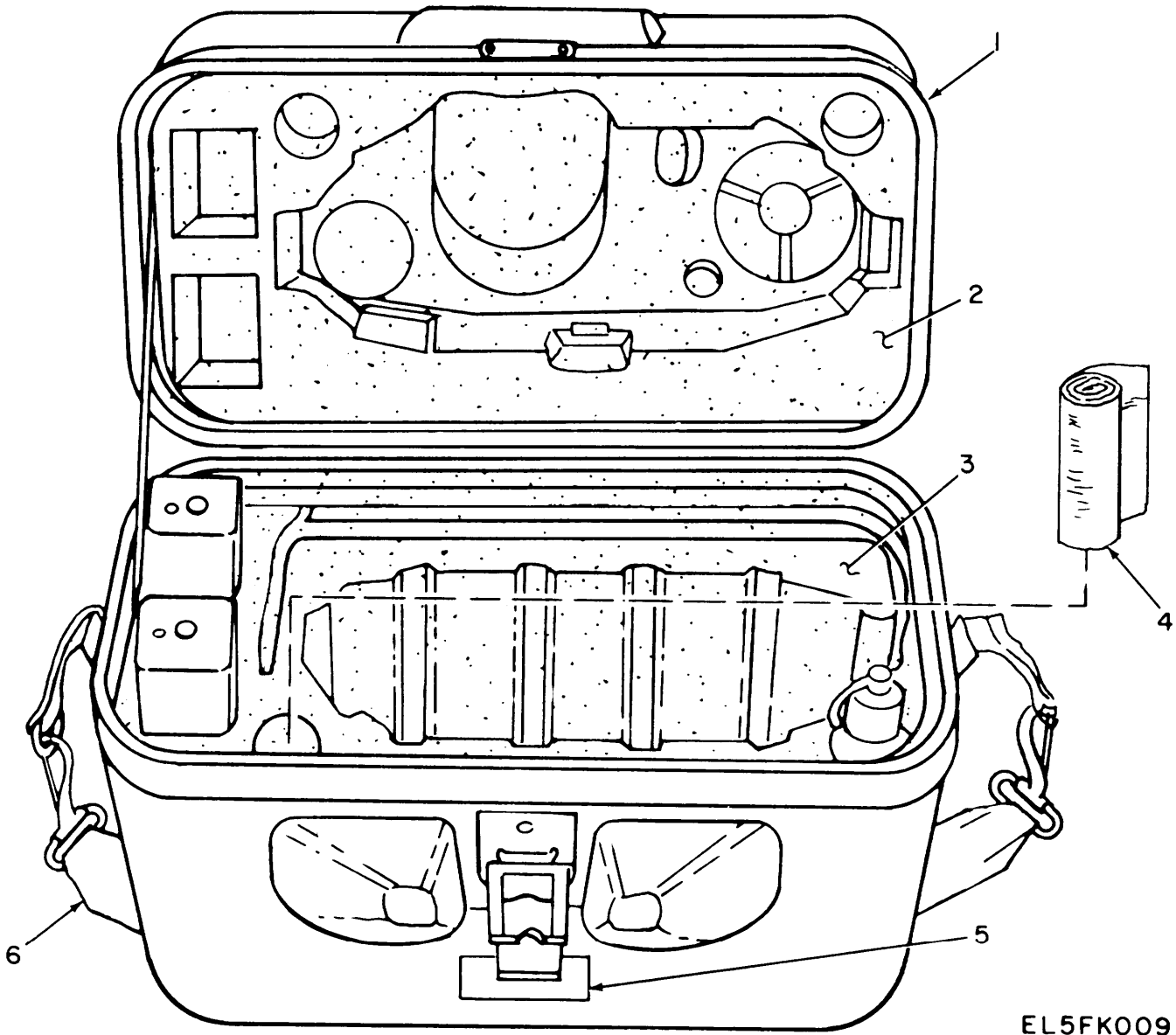


Figure 7. Cable Assembly, Special Purpose, Electrical CX-13021/G VS-5.



SECTION II (1) ILLUSTRATION (A) (B) FIG ITEM NO NO		(2) SMR CODE	(3) NATIONAL STOCK NUMBER	TM11-5860-201-30P (4) (5) FSCM PART NUMBER		(6) DESCRIPTION	(7) USABLE ON CODE U/M	(8) QTY INC IN UNIT
GROUP 02 CABLE ASSEMBLY, SPECIAL PURPOSE, ELECTRICAL CX-13021/GVS-5								
7	1	XDFZZ		80063	SM-C-852138	COVER, CHASSIS	EA	1
7	2	PAFZZ	5305-00-054-5648	96906	MS51957-14	SCREW,MACHINE	EA	7
7	3	PAFZZ	5365-01-074-5933	80063	SM-B-537326-3	BUSHING	EA	1
7	4	PAFZZ		81349	CO-02MOE-2-20-0 63	CABLE	FT	25
7	5	PAFZZ	5365-00-598-5394	96906	MS3420-8A	BUSHING,RUBBER	EA	1
7	6	PAFZZ	5365-00-828-8526	96906	MS3420-6A	BUSHING,RUBBER	EA	1
7	7	PAFZZ	5365-00-598-5287	96906	MS3420-12A	BUSHING,RUBBER	EA	1
7	8	PAFZZ		80063	SM-C-955576	CONNECTOR,PLUG,ELEC	EA	1
7	9	XDDZZ		80063	SM-C-955561	BOX,CAB	EA	1
7	10	PAFZZ	5305-01-071-9375	80063	SM-C-955557	SETSCREW	EA	1
7	11	XDFZZ		80063	SM-C-955563	COVER,CABLE SUPPORT	EA	1
7	12	PAFZZ	5305-00-993-9189	96906	MS24693-C2	SCREW,MACHINE	EA	3
7	13	PAOZZ	7690-01-074-5965	80063	SM-C-852288	LABEL	EA	1
7	14	PAFZZ	5915-00-513-1999	80063	SM-C-852013	FILTER,RADIO FREQUE	EA	1
7	15	PAFZZ	5310-00-543-2740	96906	MS35333-74	WASHER,LOCK	EA	1
7	16	PAFZZ		96906	MS35431-9	TERMINAL	EA	1
7	17	PAFZZ	5961-00-421-3002	81349	JAN1N5550	SEMICONDUCTOR DEVIC	EA	2
7	18	PAFZZ		80063	SM-C-955559	TERMINAL	EA	1
7	19	XDDZZ		80063	SM-D-852147	CAP, THREAD MAC	EA	1
7	20	PAOZZ	5330-00-582-2571	96906	MS9020-24	PACKING,PREFORMED	EA	1
7	21	XDDZZ		80063	SM-C-852017	SEAL, SHAFT	EA	1
7	22	XDDZZ		80063	SM-C-852153	SPRING, CONICAL	EA	1
7	23	XDDZZ		80063	SM-C-955556	SHAFT, CONVERTER	EA	1
7	24	PAFZZ	5950-01-074-5934	80063	SM-C-852040	INDUCTOR	EA	1
7	25	PAFZZ	5310-01-074-5982	80063	SM-C-955558	WASHER, SHOULDERED	EA	2
7	26	PAFZZ	5940-01-074-5935	80063	SM-C-852150	TERMINAL	EA	1
7	27	PAFZZ	5940-00-614-0537	96906	MS35431-1	TERMINAL, LUG	EA	1
7	28	PAFZZ	5310-00-058-3599	96906	MS35335-57	WASHER, LOCK	EA	1
7	29	PAFZZ	5310-00-208-3786	80205	NAS671C4	NUT, PLAIN, HEXAGON	EA	3
7	30	PAFZZ	5305-00-947-2169	96906	MS35275-217	SCREW,MACHINE	EA	2
7	31	PAFZZ	5310-00-550-3715	96906	MS35333-70	WASHER, LOCK	EA	7
7	32	PAFZZ	5961-01-064-4870	81349	JAN2N6353	TRANSISTOR	EA	1
7	33	PAFZZ	5365-00-632-3101	80205	NAS43DD0-12	SPACER, SLEEVE	EA	2
7	34	PAFZZ	5910-01-027-1376	81349	M39006-09-8392	CAPACITOR, FIXED, ELE	EA	1
7	35	PAFZZ	5961-00-892-0919	81349	JAN1N3031B	SEMICONDUCTOR DEVIC	EA	1
7	36	PAFZZ	5910-00-010-8721	81349	M39014-02-1419	CAPACITOR, FIXED, CER	EA	1
7	37	PAFZZ	5905-00-728-6139	81349	RCR07G222JM	RESISTOR, FIXED, COMP	EA	1

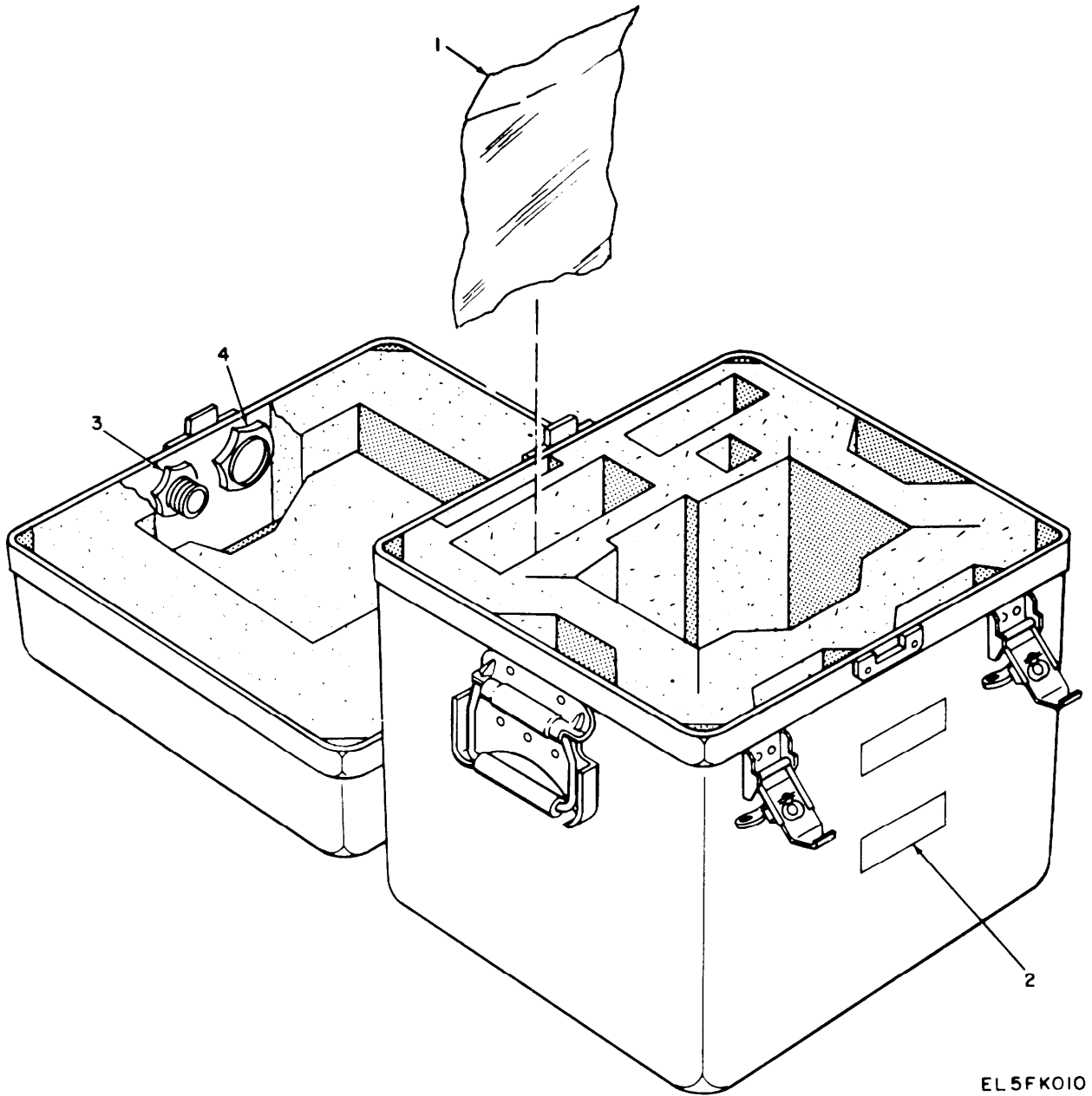
SECTION II		TM11-5860-201-30P					(7)	(8)
(1)	(2)	(3)	(4)	(5)	(6)			
ILLUSTRATION					DESCRIPTION		QTY	
(A)	(B)	NATIONAL					INC	
FIG	ITEM	STOCK	FSCM	PART		USABLE ON CODE	IN	
NO	NO	NUMBER		NUMBER		U/M	UNIT	
7	38	PAFZZ 5905-00-110-7620	81349	RCR07G102JM	RESISTOR, FIXED, COMP	EA	1	
7	39	PAFZZ 5310-00-595-6211	96906	MS15795-803	WASHER, FLAT	EA	2	
7	40	PAFZZ 5910-01-027-8106	81349	M39006-09-8714	CAPACITOR, FIXED, ELE	EA	1	
7	41	PAFFF 5860-01-074-6000	80063	SM-D-852141	CIRCUIT CARD ASSEMB	EA	1	
7	42	PAFZZ 5910-00-107-4241	81349	M39014-02-1321	CAPACITOR, FIXED, CER	EA	1	
7	43	PAFZZ 5905-00-104-8349	81349	RCR20G511JM	RESISTOR, FIXED, COMP	EA	1	
7	44	XDFZZ	80063	SM-C-852154	PLATE, IDENTIFI	EA	1	



EL5FK009

Figure 8. Case, Field, Laser Infrared Observation Device CY-7536/GVS-5

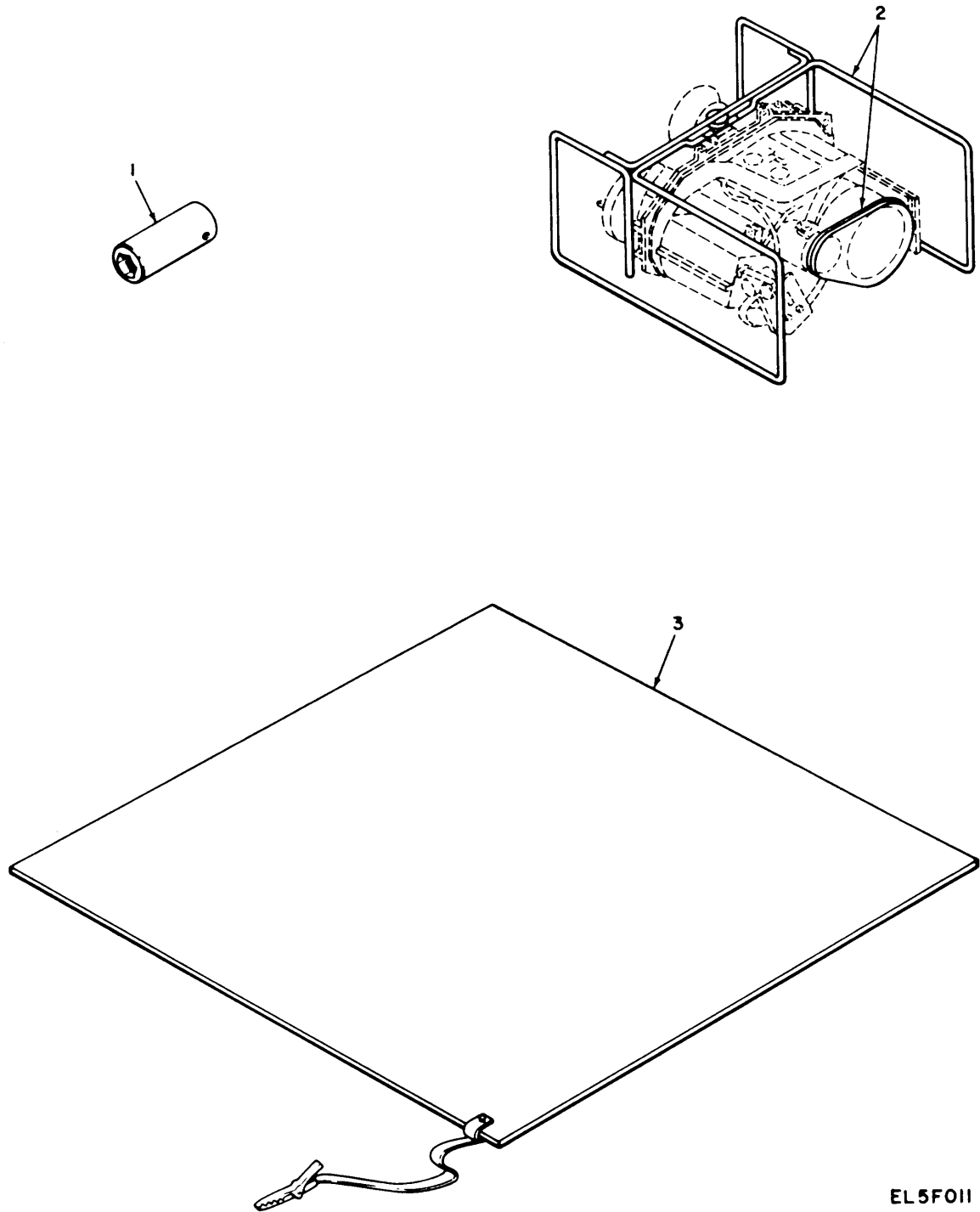
SECTION II		TM11-5860-201-30P							
(1)	(2)	(3)	(4)	(5)	(6)	(7)	(8)		
ILLUSTRATION					DESCRIPTION		QTY	INC	
FIG (A)	ITEM (B)	NATIONAL	STOCK	PART		USABLE ON CODE	U/M	IN	UNIT
NO	NO	NUMBER	FSCM	NUMBER					
GROUP 03 CASE, FIELD, LASER INFRARED OBSERVATION									
DEVICE CY-7536/GVS-5									
8	1	PAOZZ	5330-01-074-5971	80063	SM-A-937841			FT	1
8	2	PAFZZ	5860-01-074-5932	80063	SM-C-937839			EA	1
8	3	PAFZZ	5860-01-074-5931	80063	SM-D-937824			EA	1
8	4	PAOZZ		81348	NNN-P-40TY1C5S3 X5			BX	20
8	5	XDFZZ		80063	SM-C-852094			EA	1
8	6	PAOZZ		81349	M1698TYPE1			EA	1



EL 5FK010

Figure 9. Case, Transit, Laser Infrared Observation Set CY-7535/GVS-5.

SECTION II		TM11-5860-201-30P					
(1)	(2)	(3)	(4)	(5)	(6)	(7)	(8)
ILLUSTRATION					DESCRIPTION		QTY
(A)	(B)	NATIONAL					INC
FIG	ITEM	STOCK		PART			IN
NO	NO	CODE	NUMBER	FSCM	NUMBER	USABLE ON CODE	U/M
							UNIT
GROUP 04 CASE, TRANSIT, LASER INFRARED							
OBSERVATION SET CY-7535/GVS-5							
9	1	XDOZZ		80063	SM-C-852109	BAG, STORAGE	EA 1
9	2	XDFZZ		80063	SM-C-852092	PLATE, IDENTIF	EA 1
9	3	PAFZZ	4820-01-076-8554	08992	TA333-50-50-R	VALVE, PRESSURE EQUA	EA 1
9	4	PAFZZ	6685-00-989-5312	96906	MS18013-1	INDICATOR, HUMIDITY	EA 1



EL5F011

Figure 10. Special Tools

SECTION II		TM11-5860-201-30P					
(1)	(2)	(3)	(4)	(5)	(6)	(7)	(8)
ILLUSTRATION					DESCRIPTION		QTY
(A)	(B)	NATIONAL					INC
FIG	ITEM	SMR	STOCK	PART			IN
NO	NO	CODE	NUMBER	NUMBER		USABLE ON CODE	U/M
							UNIT
GROUP 99 SPECIAL TOOLS							
10	1	PEFZZ	5120-01-075-9098	55719	TMBS-8		EA 1
					SOCKET, SOCKET WRENC		
					BOI: 2 AUTH DIRECT SUPPORT UNIT		
					2 AUTH DEPOT		
10	2	PEFZZ	5860-01-076-2777	49671	2392233		EA 1
					FIXTURE, HOLDING RFO		
					BOI: 2 AUTH DIRECT SUPPORT UNIT		
					2 AUTH DEPOT		
10	3	PEFZZ		12038	A5476		EA 1
					PAD, GND, STATIC		
					BOI: 2 AUTH DIRECT SUPPORT UNIT		
					2 AUTH DEPOT		



NATIONAL STOCK NUMBER AND PART NUMBER INDEX  
 NOTE: LATEST NATIONAL STOCK NUMBER AND PART NUMBER ASSIGNMENTS ARE  
 INCLUDED AT END OF INDEX.

STOCK NUMBER	FIGURE NO	ITEM NO	STOCK NUMBER	FIGURE NO	ITEM NO
5905-00-006-5599	6	12	5310-00-781-9483	2	79
5961-00-008-8361	6	50	5930-00-803-4570	2	75
5910-00-010-8498	6	32	5310-00-812-4292	2	69
5910-00-010-8666	6	44	5310-00-812-4292	3	1
5910-00-010-8721	7	36	5910-00-822-5683	6	53
5310-00-043-4708	2	74	5365-00-828-8526	7	6
5305-00-054-5648	7	2	5305-00-833-8631	1	3
5310-00-057-0573	2	31	5910-00-838-9421	6	27
5310-00-058-3599	7	28	5355-00-850-9799	2	61
5305-00-068-5410	4	22	5961-00-892-0919	7	35
5310-00-069-5291	2	59	5930-00-892-9026	2	52
5905-00-104-8349	7	43	5930-00-893-1928	2	56
5905-00-106-1249	6	60	5305-00-901-5077	2	58
5905-00-106-3666	6	3	6605-00-918-3775	2	76
5905-00-106-3667	6	13	5305-00-922-8777	2	24
5910-00-107-4241	7	42	5305-00-922-8777	5	8
5905-00-110-7620	6	57	5305-00-922-8778	2	44
5905-00-110-7620	7	38	5305-00-924-8380	2	19
5910-00-113-5471	6	42	5961-00-925-3777	6	1
5905-00-114-0711	6	69	5310-00-928-2690	2	27
5905-00-114-5456	6	73	5310-00-928-2690	4	23
5905-00-118-4559	6	31	5310-00-933-8118	2	30
5905-00-119-3505	6	36	5961-00-938-1135	6	4
5905-00-120-9154	6	65	5305-00-941-3545	2	73
5905-00-126-6694	6	34	5305-00-941-3551	3	4
5961-00-134-6355	2	72	5305-00-941-6402	5	2
5905-00-135-3975	6	61	5305-00-941-9437	2	29
5905-00-135-6045	6	24	5305-00-947-2169	7	30
5905-00-138-3376	6	64	5961-00-951-8757	6	17
5905-00-139-1923	6	67	5970-00-954-1622	2	4
5905-00-141-1183	6	14	5305-00-959-0379	2	39
5910-00-143-0501	6	8	6685-00-989-5312	9	4
5905-00-151-4677	6	33	5355-00-990-3173	2	57
5910-00-153-9996	6	46	5305-00-993-9189	7	12
5961-00-160-5528	6	10	5962-01-003-2572	6	5
5905-00-184-7704	6	30	5910-01-003-8291	6	39
5310-00-208-3786	2	47	5950-01-007-4681	6	41
5310-00-208-3786	7	29	5999-01-025-1009	6	18
5310-00-209-1239	2	68	5910-01-027-1376	7	34
5961-00-226-8579	6	37	5910-01-027-8106	7	40
5905-00-228-5506	6	35	5950-01-029-8025	6	43
5961-00-254-2993	6	21	5961-01-029-9159	6	47
5905-00-256-5051	6	9	5905-01-035-5065	6	58
5905-00-283-3015	6	55	5905-01-041-0632	6	6
5905-00-320-6787	6	59	6140-01-042-9942	1	10
5905-00-350-8351	6	56	5910-01-053-0263	6	7
5905-00-401-8687	6	70	5305-01-054-2488	2	60
5910-00-409-5407	6	49	6240-01-062-0652	2	36
5920-00-413-1338	2	85	5961-01-064-4870	7	32
5961-00-421-3002	7	17	5995-01-069-0969	1	8
5999-00-433-1940	6	22	5860-01-069-4742	1	9
5305-00-433-3707	4	38	5860-01-070-3659	1	7
5905-00-433-6483	6	66	5860-01-070-3803	1	1
5905-00-485-4648	6	54	5860-01-070-5422	4	5
5905-00-492-2173	6	63	5365-01-070-5423	4	4
5961-00-494-8992	6	26	5310-01-070-5550	2	2
5915-00-513-1999	7	14	5860-01-070-8073	2	9
5961-00-518-3483	2	88	5365-01-070-8129	2	11
5310-00-543-2740	7	15	5860-01-070-8130	2	12
5310-00-543-4652	2	25	5860-01-070-8131	2	14
5310-00-543-5933	2	80	5860-01-070-8993	2	83
5310-00-550-3715	7	31	5940-01-070-8994	3	2
5961-00-565-5092	6	19	5860-01-070-8995	4	21
5330-00-582-2571	2	65	7690-01-070-9088	2	17
5330-00-582-2571	7	20	7690-01-070-9089	2	18
5940-00-583-7741	2	70	5860-01-070-9100	3	3
5310-00-595-6211	7	39	5365-01-070-9111	4	25
5310-00-595-6761	2	5	5365-01-070-9112	4	17
5365-00-598-5287	7	7	5365-01-071-4442	4	9
5365-00-598-5394	7	5	5305-01-071-4443	4	31
5940-00-614-0537	7	27	5365-01-071-4444	4	29
5905-00-617-5091	6	71	5365-01-071-4445	4	34
5365-00-632-3101	7	33	5365-01-071-4447	4	7
5310-00-716-5618	4	24	5860-01-071-4514	4	28
5305-00-717-6950	2	54	5365-01-071-9184	4	3
5310-00-723-9676	3	5	5305-01-071-9375	7	10
5905-00-728-6136	6	20	5860-01-072-0397	2	42
5905-00-728-6139	7	37	5305-01-072-0429	4	39
5310-00-773-7624	2	20	5365-01-072-0430	4	12
5905-00-780-8234	6	2	5365-01-072-1496	4	43

STOCK NUMBER		FIGURE NO	ITEM NO	STOCK NUMBER		FIGURE NO	ITEM NO
5860-01-072-2885		1	2	5860-01-075-0048		2	41
5860-01-072-7994		4	35	5365-01-075-2237		4	44
5860-01-072-8869		4	41	5860-01-075-3298		4	14
5860-01-074-0006		4	10	5950-01-075-7262		2	82
5365-01-074-5212		4	1	5905-01-075-8889		2	49
5340-01-074-5929		2	43	5120-01-075-9098		10	1
5310-01-074-5930		2	77	5860-01-076-2777		10	2
5860-01-074-5931		8	3	5305-01-076-3163		2	84
5860-01-074-5932		8	2	5305-01-076-3164		2	62
5365-01-074-5933		7	3	5310-01-076-3181		2	7
5950-01-074-5934		7	24	5305-01-076-4890		2	1
5940-01-074-5935		7	26	5305-01-076-8030		2	15
5860-01-074-5938		2	33	4820-01-076-8554		9	3
5860-01-074-5939		2	40	5340-01-077-0982		4	27
5340-01-074-5940		2	67	5860-01-077-4729		4	32
5315-01-074-5941		2	10	5930-01-078-0975		2	71
5860-01-074-5942		2	87	5905-01-079-1339		6	74
5860-01-074-5943		2	45	5905-01-079-1340		6	29
5860-01-074-5944		2	26	5950-01-079-3249		6	45
5860-01-074-5945		2	86	5950-01-079-3250		6	11
5860-01-074-5957		2	63	5950-01-079-3252		6	52
7690-01-074-5965		7	13	5330-01-080-1772		4	19
5355-01-074-5966		2	53	5330-01-080-2995		4	8
5330-01-074-5971		8	1	5330-01-080-2996		4	36
5310-01-074-5982		7	25	5330-01-080-2997		4	40
5330-01-074-5983		2	22	5330-01-080-3803		4	15
5860-01-074-6000		7	41	5330-01-080-3804		4	6
5860-01-074-6296		2	28	5860-01-080-4831		5	5
5860-01-074-6297		2	35	5330-01-080-5007		4	33
5860-01-074-6298		5	7	5310-01-081-1285		6	72
5860-01-074-6299		5	4	5950-01-084-2561		6	40
5860-01-074-6300		5	9	5950-01-084-2562		6	23
5365-01-074-6310		4	13	5950-01-084-2563		6	28
5365-01-074-6311		4	16	5330-01-085-7775		4	42
5860-01-074-6313		2	34	6240-01-089-2656		5	3
5860-01-074-6317		2	32	5910-01-092-3405		2	46
5365-01-074-6347		2	13	5905-01-092-4203		2	78
5330-01-074-6362		2	38	5930-01-097-9525		2	81
5905-01-074-6369		6	62	5930-01-098-0010		2	55
5860-01-075-0047		2	3				

FSCM	PART NUMBER	FIGURE NO	ITEM NO	FSCM	PART NUMBER	FIGURE NO	ITEM NO
12038	A5476	10	3	96906	MS35275-202	5	8
80058	BB-516-U	1	10	96906	MS35275-203	2	44
81349	CK60AW102M	6	27	96906	MS35275-206	5	2
81349	CK63AW103M	6	53	96906	MS35275-209	2	73
81349	CO-02MOE-2-20-0263	7	4	96906	MS35275-213	3	4
80058	CX-13021/GVS-5	1	8	96906	MS35275-215	2	29
80058	CY-7535/GVS-5	1	7	96906	MS35275-217	7	30
80058	CY-7536/GVS-5	1	2	96906	MS35275-229	2	19
81349	FM04-125V3A	2	85	96906	MS35333-69	2	25
81349	JAN1N3031B	7	35	96906	MS35333-70	7	31
81349	JAN1N3673RA	2	72	96906	MS35333-73	2	80
81349	JAN1N4104	6	50	96906	MS35333-74	7	15
81349	JAN1N4148	6	4	96906	MS35335-57	7	28
81349	JAN1N4570A	6	10	96906	MS35335-60	2	68
81349	JAN1N4942	6	19	96906	MS35338-134	2	27
81349	JAN1N5550	7	17	96906	MS35338-135	2	30
81349	JAN2N2222A	6	17	96906	MS35431-1	7	27
81349	JAN2N2907A	6	1	96906	MS35431-9	7	16
81349	JAN2N4150	6	21	96906	MS51859-1	4	24
81349	JAN2N6353	7	32	96906	MS51957-14	7	2
81349	JAN2N930	6	37	96906	MS51963-9	2	54
96906	MS15795-802	2	5	96906	MS75088-10	6	43
96906	MS15795-803	7	39	96906	MS75089-18	6	41
96906	MS16995-10	2	39	96906	MS77068-4	2	70
96906	MS16995-2	4	22	96906	MS9020-24	2	65
96906	MS18013-1	9	4	96906	MS9020-24	7	20
96906	MS18212-15	1	3	96906	MS91528-0N1B	2	61
96906	MS24547-1	2	75	96906	MS91528-0P1B	2	57
96906	MS24693-C2	7	12	80058	MT-4832/GVS-5	1	9
96906	MS3213-11	2	60	80058	MX-9838/GVS-5	1	1
96906	MS3213-23	2	15	81349	M1698TYPE1	8	6
96906	MS3420-12A	7	7	81349	M23053/5-105-0	2	4
96906	MS3420-6A	7	6	81349	M3464TYPE1	1	5
96906	MS3420-8A	7	5	81349	M39006-09-8392	7	34
96906	MS35275-202	2	24	81349	M39006-09-8714	7	40

## NATIONAL STOCK NUMBER AND PART NUMBER INDEX

FSCM	PART NUMBER	FIGURE NO	ITEM NO	FSCM	PART NUMBER	FIGURE NO	ITEM NO
81349	M39014-01-1336	6	42	80063	SM-B-852186	4	18
81349	M39014-01-1345	6	32	80063	SM-B-852453	4	37
81349	M39014-01-1357	6	44	80063	SM-B-852511	5	4
81349	M39014-01-1404	6	7	80063	SM-B-882442	4	31
81349	M39014-01-1422	6	15	80063	SM-C-852013	7	14
81349	M39014-02-1321	7	42	80063	SM-C-852017	7	21
81349	M39014-02-1387	6	51	80063	SM-C-852023	2	33
81349	M39014-02-1391	6	46	80063	SM-C-852029	2	38
81349	M39014-02-1403	6	39	80063	SM-C-852030	2	46
81349	M39014-02-1419	7	36	80063	SM-C-852034	2	82
81349	M39014/02-1332	6	8	80063	SM-C-852038	2	53
81349	M5423-09-03	2	52	80063	SM-C-852040	7	24
81349	M5423-10-02	2	56	80063	SM-C-852043	3	2
80205	NAS1635-02LN4	2	62	80063	SM-C-852048	2	2
80205	NAS1635-04LN12	2	84	80063	SM-C-852049	2	3
80205	NAS1635-08-8	2	58	80063	SM-C-852056	2	76
80205	NAS1640-2	4	23	80063	SM-C-852058	2	78
80205	NAS43DD0-12	7	33	80063	SM-C-852059	2	49
80205	NAS620C10L	2	79	80063	SM-C-852067	3	7
80205	NAS620C2	2	74	80063	SM-C-852070	2	35
80205	NAS620C4	2	31	80063	SM-C-852092	9	2
80205	NAS620C4L	3	5	80063	SM-C-852094	8	5
80205	NAS620C6	2	20	80063	SM-C-852096	2	50
80205	NAS620C8	2	59	80063	SM-C-852123	4	27
80205	NAS671C10	2	69	80063	SM-C-852138	7	1
80205	NAS671C10	3	1	80063	SM-C-852140	2	17
80205	NAS671C4	2	47	80063	SM-C-852150	7	26
80205	NAS671C4	7	29	80063	SM-C-852153	7	22
81348	NNN-P-40TY1C5S3X5	8	4	80063	SM-C-852154	7	44
21649	P4-10022	2	81	80063	SM-C-852155	2	36
21649	P4-10029	2	55	80063	SM-C-852156	2	37
81349	RCR05G103JS	6	58	80063	SM-C-852160	2	88
81349	RCR05G392JM	6	66	80063	SM-C-852163	4	1
81349	RCR05G472JS	6	71	80063	SM-C-852164	4	9
81349	RCR05G6R8JS	6	59	80063	SM-C-852165	4	29
81349	RCR07G101JM	6	14	80063	SM-C-852169	4	20
81349	RCR07G102JM	7	38	80063	SM-C-852172	4	16
81349	RCR07G102KM	6	57	80063	SM-C-852173	4	13
81349	RCR07G103KM	6	3	80063	SM-C-852177-1	4	26
81349	RCR07G120JS	6	13	80063	SM-C-852177-2	4	11
81349	RCR07G182JM	6	20	80063	SM-C-852187	4	21
81349	RCR07G184KM	6	6	80063	SM-C-852193	4	14
81349	RCR07G222JM	7	37	80063	SM-C-852196	4	19
81349	RCR07G244JS	6	54	80063	SM-C-852197	4	38
81349	RCR07G272JM	6	2	80063	SM-C-852199-1	4	36
81349	RCR07G330JS	6	24	80063	SM-C-852199-2	4	40
81349	RCR07G333JS	6	31	80063	SM-C-852199-3	4	42
81349	RCR07G471JS	6	65	80063	SM-C-852199-5	4	33
81349	RCR07G472KM	6	69	80063	SM-C-852199-6	4	6
81349	RCR07G475JS	6	34	80063	SM-C-852199-7	4	8
81349	RCR07G510JM	6	60	80063	SM-C-852199-8	4	15
81349	RCR07G622JM	6	35	80063	SM-C-852200	4	12
81349	RCR07G680JS	6	61	80063	SM-C-852201	4	2
81349	RCR07G683JS	6	36	80063	SM-C-852202	4	4
81349	RCR20G511JM	7	43	80063	SM-C-852203	4	7
81349	RCR20G684JS	6	73	80063	SM-C-852205	4	3
81349	RJ24FW503	6	12	80063	SM-C-852244	4	28
81349	RLR07C12R0GR	6	30	80063	SM-C-852248	4	32
81349	RNC55H1001FM	6	64	80063	SM-C-852258	6	11
81349	RNC55H1002FM	6	55	80063	SM-C-852259	4	41
81349	RNC55H2432FS	6	70	80063	SM-C-852264	4	35
81349	RNC55H4422FS	6	67	80063	SM-C-852267	4	43
81349	RNC55H4750FS	6	63	80063	SM-C-852274	2	16
81349	RNC55H5621FS	6	9	80063	SM-C-852276	2	71
81349	RNC55H6812FS	6	56	80063	SM-C-852279	2	13
81349	RNC55J5622FS	6	33	80063	SM-C-852280	2	11
81349	RW81UR866F	6	68	80063	SM-C-852288	7	13
80063	SM-A-852072	2	12	80063	SM-C-852290	6	40
80063	SM-A-852073	2	14	80063	SM-C-852302-1	6	26
80063	SM-A-852291	6	62	80063	SM-C-852304	4	30
80063	SM-A-937841	8	1	80063	SM-C-852306	6	52
80063	SM-B-537326-3	7	3	80063	SM-C-852311	6	28
80063	SM-B-852077	2	77	80063	SM-C-852320	6	47
80063	SM-B-852132	2	43	80063	SM-C-852322	2	28
80063	SM-B-852133	2	40	80063	SM-C-852337	6	23
80063	SM-B-852166	4	44	80063	SM-C-852342	2	48
80063	SM-B-852167	4	34	80063	SM-C-852343	2	1
80063	SM-B-852171	4	17	80063	SM-C-852344	6	18
80063	SM-B-852175	4	39	80063	SM-C-852345	2	51
80063	SM-B-852176	4	25	80063	SM-C-852346	6	22

## NATIONAL STOCK NUMBER AND PART NUMBER INDEX

FSCM	PART NUMBER	FIGURE NO	ITEM NO	FSCM	PART NUMBER	FIGURE NO	ITEM NO
80063	SM-C-852349	2	7	80063	SM-D-852014	2	63
80063	SM-C-852373	6	72	80063	SM-D-852016	2	21
80063	SM-C-852456	6	45	80063	SM-D-852018	2	22
80063	SM-C-852512	5	3	80063	SM-D-852019	2	41
80063	SM-C-852567-1	6	49	80063	SM-D-852021	2	66
80063	SM-C-852567-2	6	38	80063	SM-D-852025	2	83
80063	SM-C-852567-3	6	48	80063	SM-D-852037	2	67
80063	SM-C-852567-4	6	16	80063	SM-D-852045	2	64
80063	SM-C-852581-1	6	74	80063	SM-D-852061	2	86
80063	SM-C-852581-2	6	29	80063	SM-D-852062	2	26
80063	SM-C-852583	6	5	80063	SM-D-852063	2	45
80063	SM-C-882390	6	25	80063	SM-D-852136	3	6
80063	SM-C-882408	2	18	80063	SM-D-852141	7	41
80063	SM-C-882415	2	10	80063	SM-D-852147	7	19
80063	SM-C-882416	1	6	80063	SM-D-852207	4	5
80063	SM-C-882430	5	5	80063	SM-D-852281	2	23
80063	SM-C-882431	5	7	80063	SM-D-852500	5	9
80063	SM-C-937839	8	2	80063	SM-D-882432	5	1
80063	SM-C-955556	7	23	80063	SM-D-882433	5	6
80063	SM-C-955557	7	10	80063	SM-D-937800	2	87
80063	SM-C-955558	7	25	80063	SM-D-937801	3	3
80063	SM-C-955559	7	18	80063	SM-D-937824	8	3
80063	SM-C-955561	7	9	80063	SM-D-955608	2	8
80063	SM-C-955563	7	11	80063	SM-D-955608-1	2	6
80063	SM-C-955576	7	8	80063	SM-E-852010	2	34
80063	SM-C-955637	1	11	80063	SM-E-852219	4	10
80063	SM-C-955638	1	4	08992	TA333-50-50-R	9	3
80063	SM-D-852009	2	32	55719	TMBS-8	10	1
80063	SM-D-852011	2	42	49671	2392233	10	2
80063	SM-D-852012	2	9				

## LATEST PART NUMBER ASSIGNMENT

FSCM	PART NUMBER	FIGURE NO.	ITEM NO.
80063	SM-C-852109	9	1

By Order of the Secretary of the Army:

E. C. MEYER  
General United States Army  
Chief of Staff

Official:

ROBERT M. JOYCE  
Brigadier General, United States Army  
The Adjutant General

Distribution:

Active Army

HISA (Ft Monmouth) (21)  
USAINSCOM (2)  
COE (1)  
TSG (1)  
USAARENBD (1)  
DARCOM (1)  
TRADOC (2)  
OS Maj Cmd (4)  
TECOM (2)  
USACC (4)  
MDW (1)  
Armies (2)  
Corps (2)  
Svc Colleges (1)  
USASIGS (5)  
USAADS (2)  
USAFAS (2)  
USAARMS (2)  
USAIS (2)

USAES (2)  
USAICS (3)  
MAAG (1)  
USARMIS (1)  
USAERDAA (1)  
USAERDAW (1)  
Ft Gordon (10)  
Ft Carson (5)  
Army Dep (1) except  
    SAAD (30)  
    TOAD (14)  
    SHAD (2)  
Ft Gillem (10)  
USA Dep (1)  
Sig Sec USA Dep (1)  
Ft Richardson (CERCOM Ofc) (2)  
Units org under fol TOE:  
    29-207 (2)  
    29-610 (2)

NG: None

USAR: None

For explanation of abbreviations used, see AR 310-50.

RECOMMENDED CHANGES TO EQUIPMENT TECHNICAL PUBLICATIONS



THEN... JOT DOWN THE DOPE ABOUT IT ON THIS FORM. CAREFULLY TEAR IT OUT. FOLD IT AND DROP IT IN THE MAIL!

SOMETHING WRONG WITH THIS PUBLICATION?

FROM (PRINT YOUR UNIT'S COMPLETE ADDRESS)

Commander  
Stateside Army Depot  
ATTN: AMSTA-US  
Stateside, N.J. 07703

DATE SENT

10 July 1975

PUBLICATION NUMBER

TM 11-5840-340-20P

PUBLICATION DATE

23 Jan 78

PUBLICATION TITLE

Radar Set AN/PRC-76

BE EXACT PIN-POINT WHERE IT IS

PAGE NO	PARA-GRAPH	FIGURE NO	TABLE NO
33			
44		19	
45			

IN THIS SPACE TELL WHAT IS WRONG AND WHAT SHOULD BE DONE ABOUT IT:

For item 2, change the NSN to read: 5835-00-134-9186.  
Reason: Accuracy.

Identify the cover on the junction box (item no. 5).  
Reason: It is a separate item and is not called out on figure 19.

Add the cover of the junction box as an item in the listing for figure 19.  
Reason: Same as above

SAMPLE

PRINTED NAME GRADE OR TITLE AND TELEPHONE NUMBER

SSG I. M. DeSpirit of 999-1776

SIGN HERE

DA FORM 2028-2  
1 JUL 79

PREVIOUS EDITIONS ARE OBSOLETE.

PS--IF YOUR OUTFIT WANTS TO KNOW ABOUT YOUR RECOMMENDATION MAKE A CARBON COPY OF THIS AND GIVE IT TO YOUR HEADQUARTERS

TEAR ALONG PERFORATED LINE



FILL IN YOUR  
UNIT'S ADDRESS

FOLD BACK

DEPARTMENT OF THE ARMY

OFFICIAL BUSINESS

Commander  
US Army Communications and  
Electronics Materiel Readiness Command  
ATTN: DRSEL-ME-MQ  
Fort Monmouth, New Jersey 07703

TEAR ALONG PERFORATED LINE



# THE METRIC SYSTEM AND EQUIVALENTS

## WEIGHT MEASURE

1 Centimeter = 10 Millimeters = 0.01 Meters = 0.3937 Inches  
 1 Meter = 100 Centimeters = 1000 Millimeters = 39.37 Inches  
 1 Kilometer = 1000 Meters = 0.621 Miles

## WEIGHTS

1 Gram = 0.001 Kilograms = 1000 Milligrams = 0.035 Ounces  
 1 Kilogram = 1000 Grams = 2.2 lb.  
 1 Metric Ton = 1000 Kilograms = 1 Megagram = 1.1 Short Tons

## LIQUID MEASURE

1 Milliliter = 0.001 Liters = 0.0338 Fluid Ounces  
 1 Liter = 1000 Milliliters = 33.82 Fluid Ounces

## SQUARE MEASURE

1 Sq. Centimeter = 100 Sq. Millimeters = 0.155 Sq. Inches  
 1 Sq. Meter = 10,000 Sq. Centimeters = 10.76 Sq. Feet  
 1 Sq. Kilometer = 1,000,000 Sq. Meters = 0.386 Sq. Miles

## CUBIC MEASURE

1 Cu. Centimeter = 1000 Cu. Millimeters = 0.06 Cu. Inches  
 1 Cu. Meter = 1,000,000 Cu. Centimeters = 35.31 Cu. Feet

## TEMPERATURE

$5/9(^{\circ}\text{F} - 32) = ^{\circ}\text{C}$   
 212° Fahrenheit is equivalent to 100° Celsius  
 90° Fahrenheit is equivalent to 32.2° Celsius  
 32° Fahrenheit is equivalent to 0° Celsius  
 $9/5^{\circ}\text{C} + 32 = ^{\circ}\text{F}$

## APPROXIMATE CONVERSION FACTORS

TO CHANGE	TO	MULTIPLY BY
Inches	Centimeters	2.540
Feet	Meters	0.305
Yards	Meters	0.914
Miles	Kilometers	1.609
Square Inches	Square Centimeters	6.451
Square Feet	Square Meters	0.093
Square Yards	Square Meters	0.836
Square Miles	Square Kilometers	2.590
Acres	Square Hectometers	0.405
Cubic Feet	Cubic Meters	0.028
Cubic Yards	Cubic Meters	0.765
Fluid Ounces	Milliliters	29.573
its	Liters	0.473
arts	Liters	0.946
allons	Liters	3.785
Ounces	Grams	28.349
Pounds	Kilograms	0.454
Short Tons	Metric Tons	0.907
Pound-Feet	Newton-Meters	1.356
Pounds per Square Inch	Kilopascals	6.895
Miles per Gallon	Kilometers per Liter	0.425
Miles per Hour	Kilometers per Hour	1.609

TO CHANGE	TO	MULTIPLY BY
Centimeters	Inches	0.394
Meters	Feet	3.280
Meters	Yards	1.094
Kilometers	Miles	0.621
Square Centimeters	Square Inches	0.155
Square Meters	Square Feet	10.764
Square Meters	Square Yards	1.196
Square Kilometers	Square Miles	0.386
Square Hectometers	Acres	2.471
Cubic Meters	Cubic Feet	35.315
Cubic Meters	Cubic Yards	1.308
Milliliters	Fluid Ounces	0.034
Liters	Pints	2.113
Liters	Quarts	1.057
ers	Gallons	0.264
ms	Ounces	0.035
ograms	Pounds	2.205
Metric Tons	Short Tons	1.102
Newton-Meters	Pounds-Feet	0.738
Kilopascals	Pounds per Square Inch	0.145
ometers per Liter	Miles per Gallon	2.354
ometers per Hour	Miles per Hour	0.621



**PIN: 044617-000**